

July 2026

FREE monthly community magazine for Kumeu
& surrounding townships

Kumeu

Courier



- WIN Pak'nSave GIFT CARDS- look inside
- Home & garden
- Health & beauty
- Property market report

**Celebrating 10 years with
Drain Ninjas
0800 4 NINJA**



Greetings

Bethells Beach Surf Life Saving Patrol and Muriwai Volunteer Lifeguard Service members are among those shortlisted for Northern Region surf awards.

They will be known after July 4 when the Surf Life Saving New Zealand 2026 Toyota Financial Services Surf Life Saving Northern Region Awards of Excellence are announced during the evening at Shed 10 in Auckland.

Bethells Beach SLSP is among four clubs vying for the Supreme Award Club of the Year title.

Members Daniel Harvey is nominated for both Instructor of the Year and Examiner of the Year (three nominees in each), while James Kendrick is among three nominations for Duty Officer of the Year, and Isabella Barrowman is up for BP Rescue of the Year.

Muriwai members in various categories include Catherine Nankiwell (AON Developing Surf Official of the Year), Evelyn Michael (Junior Surf Contribution of the Year), Charlotte McIntyre (Under 14 Sportsperson of the Year - female), and Bryce Pearson (BP Powercraft Contribution of the Year).

About 332 lives were saved by Northern Region lifeguards this season - starting last October.

A further 473 people were assisted to safety, says SLSNZ, adding the Northern Region is the largest with 18 clubs patrolling 24 beach locations from the Far North to Raglan in the Waikato.

Patrols did 24,751 preventative actions and helped 174,242 beachgoers return home safely.

Northern Region surf lifeguards contributed almost 65,000 volunteer hours across the season and were called on for 106 after-hours search and rescue operations.

Guards attended 102 major first-aids and 511 minor first-aids and did 73 searches.

Meanwhile, plenty of good feedback has come for stories in our June and May issues, including Kumeu resident Malcolm Fuller's dilemma and local MP Chris Penk's column.

Book fairs are enjoying a surge in popularity, as are cat shows and other events.

We feature plenty more in this issue.

Enjoy your read.

Editor Geoff Dobson.



What's inside

- 3 People & Places
- 9 Safer Communities
- 10 Community News
- 16 Food & Beverage
- 17 Property Hub
- 19 Property News
- 24 Property Statistics
- 28 Property Market
- 41 Home & Garden
- 49 Young Learners
- 51 Aged Care
- 54 Health & Beauty
- 57 Area Columnists

Advertising starts at only \$100 + GST which includes a business card, editorial and an image.

Get in touch with Gabrielle today editorial@kumeucourier.co.nz

ENQUIRIES / FEEDBACK / ADVERTISING:

Geoff Dobson -027 757 8251
geoffdobson2017@gmail.com

COVER PHOTO: Drain Ninjas
PRINT RUN: 10,00 copies, Treehouse Print
EMAIL DATABASE: Sublime NZ

DISCLAIMER: Articles published are submitted by individual entities and should not be taken as reflecting the editorial views of this magazine or the publishers of The Kumeu Courier Limited. Articles are not to be re-published unless written consent is granted from the publisher (Graham McIntyre).



People & Places

KUMEUCOURIER.CO.NZ

Celebrating 10 years with Drain Ninjas

business was never just about drains – it's about people, resilience, and showing up when it matters most.

18 The Concourse, Henderson

0800 4 NINJA (64652) admin@drainninjas.co.nz



This year marks a major milestone for Drain Ninjas – 10 years in business serving the Auckland community. What started as a “man in a van” with a vision has grown into a thriving, award-winning company with a fleet of specialist vehicles, a skilled team, and a reputation for getting the job done right.

Over the past decade, Drain Ninjas has expanded from a single operator into a team of 15 dedicated staff, supported by multiple vans, vacuum trucks, and a sister company, Ninja Group Drainage & Civil, specialising in drainage repairs and civil works. While the scale has grown, the core values have stayed the same – reliability, professionalism, and a genuine commitment to helping customers when they need it most.

At the heart of this journey is the team. Drainage is not always glamorous work, but it is essential – and it takes a special kind of person to show up in all conditions, solve complex problems, and keep critical systems flowing. From technicians in the field to the office team behind the scenes, every member plays a vital role. This 10-year milestone is as much theirs as it is the company's.

Drain Ninjas is also proud to be deeply connected to the local community. Over the years, the business has supported local initiatives, including sponsoring the Riverhead Athletics Club and its Tiny Tots division, schools including Waimauku, Taupaki, Dairy Flat, Coatesville, Hobsonville, and West Harbour through Ag Days and sponsorship events. Being part of the community means more than just providing a service – it's about showing up, giving back, and supporting the people and families who have supported us.



Reaching 10 years in business hasn't come without its challenges. Like many small businesses, there have been long days, tough calls, and moments that tested resilience. But with each challenge came growth, learning, and a stronger foundation for the future.

In 2025, those efforts were recognised with a High Performance Award at the North West Country Business Awards – a proud moment that reflects the hard work of the entire team.

As we look ahead, we're not slowing down. We're building, evolving, and setting the standard for what drainage service should look like in New Zealand. Because this



Adult Therapy



Life can be challenging, even for the people who appear to be coping well on the surface. Many of us carry stress, grief, anxiety, relationship difficulties, or experiences from the past that continue to influence how we feel about ourselves, others, and the world around us.

As a counsellor and EMDR practitioner based in Waimauku, I work with adolescents, adults and couples navigating a wide range of concerns, including

anxiety, depression, trauma, relationship difficulties, life transitions, loss, burnout, and low self-esteem. Some people come to therapy with a clear understanding of what they want to work on, while others simply know that something doesn't feel quite right. Both are welcome.

My approach is warm, practical, and collaborative. Meaningful change happens within a safe and trusting therapeutic relationship, where people feel genuinely heard, understood, and accepted. Together, we explore the challenges you are facing, identify your strengths, and work towards the changes that matter most to you.

Alongside traditional talk therapy, I offer EMDR (Eye Movement Desensitisation and Reprocessing), an evidence-based therapy that can be particularly effective for trauma, anxiety, distressing memories, and experiences that feel "stuck." EMDR helps the brain process difficult experiences in a way that reduces their emotional impact and allows people to move forward with greater confidence and resilience.

I also work with couples who are seeking to improve communication, rebuild trust, navigate conflict, or strengthen their connection.

Whatever brings you to therapy, my goal is to provide a space where you can feel safe to reflect, grow, and move towards the life and relationships you want. You are welcome to contact me to discuss your needs.

Dr Amanda Perry

THE COUNSELLING COTTAGE
 Dr Amanda Perry
 Talking Therapy & EMDR
www.counsellingcottage.co.nz
 027 295 5447

Five ways your voices have helped shape Rodney

Rodney is growing fast, and local investment is focused on the things that matter most to communities.

Our Local Board Plan helps guide those decisions, based on feedback from local people, and with consultation open from 23 June, now is the time to let us know what's important where you live.

"Our focus is on making everyday life better," says Rodney Local Board Chair Guy Wishart. "That means better parks, safer roads, reliable public transport, opportunities for young people, and caring for the environment."

Here are five examples of how community priorities have helped shape investment across Rodney.

1. Game on at Centennial Park

Wellsford's Centennial Park courts have been rebuilt through a \$2 million upgrade, including new surfaces, lighting, fencing, drainage, wheelchair access and pathways. The upgraded courts reopened in May and are already being enjoyed by the community.

2. Riverhead's recreation hub

Major improvements at Riverhead War Memorial Park have created a popular destination for families and young people, with a playground, skatepark, upgraded courts, better parking and improved access.

3. Easier commuting in Warkworth

The Warkworth Community Transport Hub provides a

AK HAVE YOUR SAY

COMMUNITY GARDENS OR COMMUNITY CENTRES?

What's important where you live? Tell us by 23 July.

akhaveyoursay.nz/localboardplans

Local voices, local choices.

Rodney Local Board
 Auckland Council

central place for commuters to park and catch the bus, helping reduce pressure on town centre parking while supporting public transport use.

4. Bringing communities together

Events and programmes such as Community Conversations, Matariki celebrations, Soup Chats, She Connects and Huapai Family Fun Day help people connect, build relationships and strengthen community spirit.

5. Caring for Rodney's environment

Environmental programmes supported by the local board are helping volunteers, schools and landowners protect native wildlife through planting, pest control and conservation projects.

These are just some of the ways community feedback influences local investment through the Local Board Plan. Make sure you have your say on the draft plan and let us know what you think!

Have your say by 23 July at akhaveyoursay.nz/localboardplans

Drop-in events-

- Village Markets at Helensville - Sunday 19 July, 8.30am-12.30pm, Helensville Showgrounds

- Kumeū Markets - Sunday 19 July, 10am-1pm, Kumeū Showgrounds

Hearing-style event -

- Wednesday 1 July, 4pm, Rodney Local Board Office, Warkworth (in person and online, registration required)

Ross's retirement project

Former Kumeu and Helensville businessman Ross Minifie moved to Riverhead about five years ago, and he's been doing up a Riverhead home and garden for most of that time.

A previous landscaping role has proved useful with Ross spending "thousands" at Mitre 10 Mega Westgate on plants, pots, garden ornaments and more for his Riverhead home. He's also done up the house, including painting, pathways and other things.



Ross is proud of his achievements and has invited Mitre 10 Mega Westgate owner-operator David Hargreaves around for a peek, saying he's spent most of his money with the business.

He's added to the home with an outdoor seating and barbecue area, and

the home interior is full of bric-a-brac. It's all under security - including a guard dog, cameras and warning signs.

Ross reckons his four-bedroom, two-bathroom home on a large section in the heart of historic Riverhead is worth about \$2 million now all the work has been done. He's selling his beloved Maserati car now he faces driving restrictions and says it also takes up room.

Sometimes dubbed the "Mayor of Riverhead", Ross says "the Deputy Mayor" lives nearby and they often meet up at various venues.

Ross - pictured in his back yard with one of 159 hats, some of his neck chains and giving the "Kaiwaka handshake" in honour of his business days there - says he, his wife and father-in-law, plus the guard dog, all live on the property which he maintains.

He enjoys the work although he's rapidly running out of tasks.

Ross says he has had many good comments about his home and garden from passers-by, helping make the work worthwhile.



Big space. Small space. The right design changes everything.

CUSTOM CABINETRY FOR EVERY HOME

We design customised kitchens, laundries, and living spaces that suit your lifestyle, featuring clever storage, thoughtful layouts, and quality craftsmanship. With over 30 years in business, we offer a 10 year transferable Mastercraft guarantee.



Book a Free Design Consultation
 Visit our Millwater Design Centre - 177 Millwater Parkway
kitchenpeople.co.nz | (09) 424 3468

QUALITY WATER

Supplies 7 DAYS PHONE NOW!
 Bev & Andrew Speedy

Registered by Ministry of Health & Auckland Council
 Fresh Water Supplies

Ph. **411.8116** Tlx **027.345.3805**

Understanding vestibular physiotherapy



Feeling dizzy, unsteady, or “off balance” can be incredibly disruptive, and it is far more common than most people realise. The vestibular system, located deep within the inner ear, helps you stay upright, orient yourself in space, and move

with confidence. When this system becomes irritated or impaired, symptoms like vertigo, spinning sensations, nausea, blurred vision, or a sense of floating can appear suddenly and linger longer than expected.

Vestibular physiotherapy is a specialised area of physiotherapy designed to retrain the brain and inner ear to work together more effectively. Through targeted exercises, gentle head and eye movements, balance retraining, and tailored strategies, vestibular physios help reduce dizziness, improve stability, and restore ease in everyday movement. It's evidence-based, highly individualised, and often life-changing for people who have been struggling in silence.

Common conditions treated include BPPV (Benign Paroxysmal Positional Vertigo), vestibular neuritis, labyrinthitis, post-concussion dizziness, and general balance disorders. Treatment may involve repositioning techniques, gaze-stabilisation exercises, and gradual exposure to movements that currently trigger symptoms, all delivered at a pace that feels safe and manageable.

At Riverhead Physiotherapy & Pilates, we're fortunate to have Sheldon Redman, a specialist Vestibular Physiotherapist with decades of clinical experience. Sheldon helps patients rebuild confidence step by step. His expertise ensures each treatment plan is precise, supportive, and grounded in best practice. If dizziness or unsteadiness is affecting your daily life, you don't have to wait it out. Vestibular physiotherapy offers clear, effective pathways back to steady, confident movement and Sheldon can guide you through every stage of recovery.

To book in with Sheldon you can head to www.riverheadphysio.co.nz, email physio@riverheadphysio.co.nz or call 027 313 6036.

- REFORMER PILATES STUDIO
- MASSAGE THERAPY & LYMPHATIC DRAINAGE
- ACUPUNCTURE / DRY NEEDLING
- ACC ACCREDITED PROVIDER
- PRE/POST SURGICAL REHAB
- SPORTS INJURIES

0273136036

1058 Coatesville-Riverhead Hwy

physio@riverheadphysio.co.nz

www.riverheadphysio.co.nz

Mindbody app for pilates

Restore your blades with Mister Sharp



A sharp blade makes all the difference, whether you're preparing meals, tending the garden, sewing, or working with specialist tools. Mister Sharp Auckland offers a professional mobile sharpening service throughout West Auckland and the wider Auckland region, restoring knives, scissors, and manual garden tools to peak performance.

Using the renowned Rotating Whetstone sharpening system, blades are sharpened at a slow speed with continuous water cooling. Unlike high-speed grinding methods that can overheat and damage steel, this process preserves the blade's temper, removes minimal material, and produces an exceptionally sharp, long-lasting edge. Mister Sharp Auckland sharpens kitchen and chef's knives, dressmaking and upholstery scissors, secateurs, hedge shears, loppers, pruning tools, and other manual garden equipment. Electric and petrol-powered tools are not serviced.

Mobile sharpening is available at your home or workplace, with a minimum spend of \$60. Unlike shop drop-off services, where you may be without your knives for several days, Mister Sharp's mobile service has your knives sharpened and returned immediately. You don't even need to be home – many customers simply leave their items in a secure location on their property, with payment details sent via text afterwards.

Customers can also visit Mister Sharp Auckland at the Catalina Bay Farmers Market every Saturday from 8.30am to 1.30pm, rain or shine. Typical sharpening prices start from around \$10 for a regular 20cm cook's knife. A standard five-knife block, including serrated knives, is usually around \$40. Scissors range from \$12-\$18, secateurs from \$8-\$10, hedge shears from \$12-\$14, and loppers around \$10.

Chipped or damaged blades can often be successfully restored. If you're unsure whether a knife can be repaired, simply send through a photo for an assessment. Regular sharpening improves performance, enhances safety, reduces effort, and helps protect your investment in quality tools. contact Mister Sharp

MISTER SHARP

Auckland

mobile knife scissor & garden tool sharpening service

www.mistersharp.co.nz info@mistersharp.co.nz

Lance Poppe 027 444 3348

Play Therapy



It can be difficult to know what to do when a child is struggling. Sometimes children can tell us what's wrong, but often they can't find the words. Instead, their feelings show up in other ways; anxiety, big emotions,

withdrawal, behaviour changes, school refusal, difficulty sleeping, or a loss of confidence.

Children naturally communicate through play. When they are given a safe, accepting space, they often tell us an incredible amount about their world without needing to specifically talk about what is concerning them.

At my practice in Waimauku, I work with children and young people facing a range of challenges, including anxiety, grief and loss, family separation, bullying, trauma, and difficulties at school. I am a counsellor, play therapist, EMDR practitioner, and qualified teacher. My background in both education and therapy allows me to understand not only children's emotional wellbeing, but also the challenges they may face in learning environments, friendships, and family life.

Many people associate EMDR (Eye Movement Desensitisation and Reprocessing) with adults, but it can be highly effective for children as well. Child-friendly EMDR uses play, creativity, storytelling, and imagination to help children process distressing experiences and reduce the emotional impact of difficult memories.

Children are remarkably resilient when they have the right support. My role is not to “fix” them, but to provide a safe space where they can make sense of their experiences, develop confidence, and reconnect with their natural ability to grow and thrive.

If you're wondering whether counselling, play therapy, or EMDR may be helpful for your child or young person, you are most welcome to contact me.

Dr Amanda Perry

THE COUNSELLING COTTAGE

Dr Amanda Perry

Play Therapy & EMDR

www.counsellingcottage.co.nz

027 295 5447

My new glasses



- round, with a cheerful touch of yellow at the top.

July is a little different for the team at For Eyes. We are taking a short winter break and will reopen after Matariki on 9 July.

While the clinic doors are temporarily closed, there is still plenty happening behind the scenes. The practice will be getting a fresh look with new

carpet being installed throughout. Our winter closure provides the perfect opportunity to complete these improvements.

Our wonderful Practice Manager, Anna, is travelling to Ireland for a very special family occasion—her brother's wedding. She will also meet her new baby nephew for the first time, a visit she has been eagerly anticipating.

Closer to home, our family has welcomed a new baby granddaughter, and I am looking forward to spending some quality family time with her during the break. Matthew and I will also be travelling to Brisbane to visit one of his favourite uncles.

As we celebrate Matariki and the winter season, it is a good time to remember that winter can be hard on our eyes. Cold winds, indoor heating and increased screen time can all contribute to dry, irritated eyes. If your eyes are feeling uncomfortable, remember to blink regularly when using digital devices, stay well hydrated and consider using lubricating eye drops if needed.

Although we are enjoying a change of pace for a few weeks, we look forward to returning refreshed and ready to welcome everyone back from 9 July.

From all of us at For Eyes, thank you for your continued support. We wish everyone a happy Matariki, a safe winter and look forward to seeing you again soon.

Best regards Molly

FOR EYES

OPTOMETRISTS

EST 1993

- Advanced scanning equipment for early detection of cataract, glaucoma and macular degeneration
- Speciality assessment of child and adult reading difficulties
- Specific-tint lenses for Irlen Syndrome
- Lenses to correct red-green colour blindness

90B Main Road, Kumeu Shopping Village

www.foreyes.co.nz foreyes@foreyes.nz 09 412 8172

From Whakapapa to Fee Simple:



How the Native Land Court Made the NorthWest

On the afternoon of 17 June, local residents gathered at Waimauku Memorial Hall for a presentation hosted by the NorWest Heritage Society exploring how the Native Land Court transformed customary Māori land into the modern system of land ownership that shaped Auckland's North-West.

Drawing on original Native Land Court records, Crown

Grants, survey plans and nineteenth-century title documents, the presentation examined the history of Waimauku, Kumeū, Huapai, Taupaki, Riverhead and the Kaipara. It traced the transition from whakapapa-based customary occupation to individualised land titles and the legal framework that continues to underpin land ownership today.

Particular attention was given to the large customary land blocks investigated by the Native Land Court. Rather than dealing with individual farms, the Court was often required to consider entire landscapes involving multiple hapū, overlapping customary interests and generations of occupation. These decisions would have lasting consequences for settlement, ownership and development across the district.

The presentation also explored how surveying, land registration, railways and banking helped reshape the North-West during the nineteenth century. As access improved and land values increased, the foundations were laid for many of the roads, farms and communities familiar today.

The presentation was delivered by Philip Parker, researcher and Deputy Chair of the NorWest Heritage Society. A former student of Huapai District School, Parker is currently undertaking doctoral studies in Switzerland while maintaining a longstanding interest in the history, land ownership and development of Auckland's North-West communities.

Concluding the presentation, Parker reflected:

"The title tells us who owns the land. The history beneath the title tells us who we are."



Baby Barns animal shelters



In rural New Zealand, keeping animals safe and comfortable year-round means having shelters that are tough enough to handle the elements – and smartly designed for everyday use. This photo captures one of Baby Barns' handcrafted animal shelters, built with the same care and quality that define every structure we

make.

Made from treated timber framing and durable roofing steel, these shelters provide reliable protection for goats, sheep, pigs, and other livestock. The curved roof design offers excellent strength and drainage, while the open front allows easy access for feeding and cleaning. Each unit is custom-built to suit your animals and your property – whether you need extra ventilation, gates, or flooring options.

At Baby Barns, we believe every animal deserves a sturdy, comfortable home. Our shelters are built on-site or delivered complete – no kits, ensuring lasting quality and convenience for farmers and lifestyle block owners across Auckland and beyond.

The five-minute plan that could save your family's life



Most of us have insurance for our homes. We lock our doors at night. We make sure the smoke alarms are working. But here's a sobering question: if an emergency happened tonight, would everyone in your household know exactly what to do?

According to fire safety experts, in a house fire you may have as little as two to five minutes to escape safely. That's not much time to think, make decisions, or search for loved ones. In an emergency, panic can quickly replace logic, turning precious seconds into dangerous delays.

That's why having a simple household escape plan is one of the most important things you can do for your family.

Why planning ahead matters

When faced with a crisis, people rarely perform at their best. Stress, fear, and confusion can make even familiar surroundings feel unfamiliar. Smoke can reduce visibility to almost nothing, while noise and adrenaline make communication difficult. A well-practised escape plan removes uncertainty. Instead of wondering what to do, everyone already knows.

The best plans include at least two ways out of every room in case a primary exit becomes blocked. They also identify who may need extra assistance, whether that's young children, elderly relatives, family members with mobility challenges, or even beloved pets.

Just as important is having a designated meeting place outside the home. It could be a letterbox, a neighbour's fence, or a tree across the road. What matters is that everyone knows where to gather.

A safe meeting place allows family members to quickly account for one another and gives emergency services accurate information if someone is still inside.

More than just fire safety

An emergency plan isn't only for fires. Storms,

floods, earthquakes, power outages, and other unexpected events can all disrupt daily life. A household emergency plan helps families think ahead about what they would do if essential services were unavailable or if they needed to leave home quickly. Consider your family's unique situation:

- Who may need assistance during an emergency?
- What supplies would you need if you were without power or water?
- How would you communicate if family members were in different locations?
- What arrangements would you make for pets?

Experts recommend that your home emergency plan also aligns with plans at work, school, childcare centres, and other places where family members spend significant time.

The fridge test

One of the simplest ways to improve your family's preparedness is to write your plan down.

Complete your emergency plan, print it out, and place it somewhere visible—many families choose the fridge. Review it regularly and make sure everyone understands their role.

A plan that sits in a drawer won't help in an emergency. A plan that is discussed, practised, and understood could make all the difference.

Be an escape plan hero

Creating an escape plan takes less than an hour, but it could save a lifetime of heartache.

The reality is that emergencies rarely arrive with a warning. The families who cope best are often the ones who have spent a little time preparing before disaster strikes.

As Chief Fire Officer of Waitākere Fire Brigade, Graham McIntyre has seen firsthand how preparation can save lives. His message is simple: don't wait until an emergency happens to start thinking about what you would do. Be an Escape Plan Hero. Sit down with your family, map your escape routes, choose a safe meeting place, and make sure everyone knows the plan.

It may be one of the most important conversations you ever have.

For more information about household escape plans, safe meeting places, and emergency preparedness, contact Graham McIntyre, Chief Fire Officer, Waitākere Fire Brigade, on 027 632 0421.



Community News

House of Travel Hobsonville - winter's charm



There's something about winter that naturally turns our minds toward travel. Perhaps it's the shorter days, the craving for warmth, or simply the comfort of dreaming about somewhere different while we're splattered by rain and cold days. Of course, being in the Southern Hemisphere means our seasons are the complete opposite to much of the

world. While we're layering up in coats and reaching for heaters, Europe and Japan for instance are currently enjoying long summer evenings, buzzing piazzas and sun-drenched streets. But maybe winter is also the perfect time to think about winter itself. We're thinking about Münchner Christkindlmarkt at Marienplatz, set against the illuminated neo-Gothic Town Hall which is one of Europe's great winter experiences. (And for those already dreaming ahead, Munich's Christmas Markets run from 20 November to 24 December this year.) Or perhaps it's crossing Switzerland aboard the Glacier Express to St Moritz before continuing into Italy on the spectacular Bernina Express, all while surrounded by snow-covered alpine scenery. Japan carries its own quiet magic in winter too, from steaming onsens to powdery slopes in Hokkaido and bowls of ramen that somehow taste even better in the cold. The irony is that while Europe and Japan are currently enjoying their warmest months, now is often when travellers quietly begin planning for their winter experiences. Winter travel doesn't always have to be about escaping the season. Sometimes it's about leaning into it somewhere entirely different! So where does winter take you?

Buzz & the team at House of Travel Hobsonville, House of Travel Hobsonville 225 Hobsonville Point Road hobsonville@hotmail.co.nz | 09 416 0700 Cruise Centre: 144 Hobsonville Point Road | 09 941 3330

111 Vet Clinic Winter Health Promo – with a twist

Stronger Together is the theme behind a new winter health promotion from 111 Vet Clinic and Kumeu Gym, bringing two local 24/7 businesses together with one shared goal: helping Kumeu residents, pets, and families stay stronger and healthier.

Winter is often the season when small health changes become more noticeable. Dogs may become slower on walks, reluctant to jump, stiff after rest, or less playful than usual. Cats may hide discomfort even more subtly, with changes in appetite, grooming, weight, toileting habits, or behaviour. A winter check-up is a valuable opportunity to detect early signs of arthritis, dental disease, weight changes, skin issues, lumps and bumps, or underlying health concerns.

Blood testing can also be a useful part of a health check, especially for senior pets, pets on long-term medication, or animals who simply seem "not quite themselves." Finding problems early often gives owners more options and helps pets stay comfortable for longer.

During June and July, clients who spend \$250 or more in one visit at 111 Vet Clinic can go in the draw to win one of two 12-month memberships at Kumeu Gym. Multiple qualifying visits can each receive an entry, provided each visit is \$250 or more. Entrants must live or work locally.

For those who already attend a gym, or who do not wish to take up a membership themselves, there is also the option to nominate someone local who would genuinely benefit from regular gym access but may not currently be able to afford it.

The promotion closes on 30 July, with winners drawn on 31 July.

Kumeu Gym is open 24/7, just like 111 Vet Clinic – open 24/7 for all your pets' needs.

Phone 111 Vet Clinic today to make your booking - 09 86 96 111



Regular & Emergency Veterinary Care
in the  of Kumeu

OPEN 24 HOURS
7 days | 365 days of the year

48 Main Road, Kumeu | office@111vetclinic.co.nz

NOW OPEN MON-FRI 9AM-5.30PM
+ SATURDAYS 10AM-3PM



NEW ZEALAND'S MOST AWARDED TRAVEL GROUP

Cnr Hobsonville Point Rd & De Hovilland Rd
09 416 0700 • hobsonville@hotmail.co.nz

HOUSE OF TRAVEL
HOBSONVILLE

Community News

Feeling anxious? Stop and read this



Stop! Put one hand on your chest and one on your stomach. Breathe in. Breathe out - make the out breath longer than the in breath. Repeat (out loud if you can) at the end of each out breath - Relax I Am Safe. Do this again. Do this repeatedly until you feel calmer. At least 10 times. Sit

down or lie down if you have to. Let yourself cry if it comes as that is the body's way of releasing excess adrenaline.

I suffered major anxiety and panic attacks, and I used to call ambulances thinking I was having a heart attack or allergic reaction. I really thought I was dying. I now know that anxiety has a purpose and it is to keep you safe. Your brain thinks you are not safe and sends the signal to your body to panic as it is the fastest way to get you away from whatever your mind has decided is the threat.

When you are safe and there is no threat, you can calm yourself with the above breathing and direct command to your body - Relax I AM Safe! I recommend practising this when you are already calm, so it becomes your go to when you feel anxious. If you can't do this in front of people - the toilet is your friend. Go and sit on the toilet - breathe and repeat.

I now help others overcome anxiety using hypnosis and other therapy techniques. If you need help get in touch. As well as hypnotherapy I also run The Joy Club (Dark Dancers) every Thursday night 7:30pm in Waimauku War Memorial Hall. Come along & experience the joy of dancing in the dark. This also helped me shake out the built-up energy of anxiety.

Lorraine Maguire Therapy.

www.lorrainemaguire.com

www.lorrainemaguire.com/thejoyclubdarkdancers




Lorraine Maguire
TRANSFORMATIONAL HYPNOTHERAPIST

I help you update the software in your mind
to become your most confident & healthiest self.

021 664 384 • lorraine.maguire@xtra.co.nz
www.lorrainemaguire.com



KIWI CARAVANS
Your Local Caravan Specialists
www.kiwicaravans.co.nz
027 244 2443 | graeme@kiwicaravans.co.nz

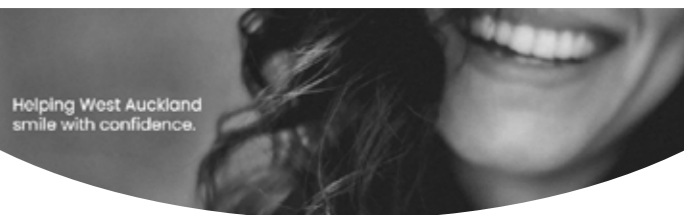


Paul Miller
Freedom Drivers Hobsonville

- Hospital & Medical Appointments
- Specialist Treatments
- School Transport
- Airport Transfers
- Shopping & Social Trips

+64 021 321 869 | (09) 302 2377
hobsonville@freedomdrivers.co.nz

ACC Approved • Total Mobility Cards • Eftpos



Helping West Auckland smile with confidence.

HUAPAI DENTAL CENTRE

A healthy smile makes a lasting impression.
Take care of your teeth with confidence and take advantage of our **\$199 check-up, xrays and hygiene combo for new patients** for a limited time only.

Whether you need a check-up, need urgent care or are thinking of a smile makeover, our experienced team is here to help.

Our services include:

- General and preventive care - checkup & hygiene
 - Cosmetic makeovers - veneers, crowns, whitening
 - Emergency dentistry - same-day appointments for accidents & toothaches
 - Sleep dentistry - IV and oral sedation available for a relaxed experience
 - Dental implants, dental bridges, and dentures for tooth replacement
 - Free basic dental care for high school children aged 13-17
- Contact us below, or book online via our website!

250 Main Road, Kumeu 0810
022 412 7155 | huapaidental@gmail.com



BOOK ONLINE
www.huapaidental.co.nz

When anxiety became my wake up call



There was a time when feeling stressed, overwhelmed, and constantly busy had become my normal. Like many of us, I spent my days moving from one responsibility to the next,

always focused on what needed to be done, rarely stopping to consider what I needed. By the time anxiety began to creep in, I realised I had lost touch with my own sense of balance and something needed to change.

As I started exploring ways to better support my wellbeing, I discovered Reiki. The experience opened my eyes to the powerful connection between mind, body, and energy, helping me find a greater sense of calm, clarity, and perspective during a challenging time.

What began as a personal healing journey soon became something much more profound. Inspired by the positive impact Reiki had on my own life, I felt drawn to learn more and explore other holistic approaches. This path eventually led me to become certified in Reiki, EFT (Emotional Freedom Techniques), meditation, and breathwork, while deepening my connection to intuition and inner guidance.

Today, through my business Enlightened Paths, I have the privilege of supporting others who are seeking greater balance, clarity, and connection in their lives. My approach is gentle, practical, and grounded. While every session is unique, many clients come looking for support through stress, overwhelm, life transitions, or simply a chance to focus on themselves for a while.

One of the greatest lessons I learned on my own journey is that wellbeing isn't about perfection. It's about paying attention to what we need, making space for ourselves, and recognising that we don't have to navigate everything alone.

Whether you're curious about Reiki, EFT, breathwork, or simply looking for a supportive space to pause and reflect, I would be honoured to be part of your journey. Sometimes the smallest step towards ourselves can create the greatest shift.

LOUISE REEVES

Holistic Wellness Practitioner
• Reiki • EFT • Breathwork • Intuition

021 0264 6140
hello@enlightenedpaths.co.nz
enlightenedpaths.co.nz
enlightenedpaths.nz



Keeping Auckland kids warm



Local residents and businesses are coming together to support Give a Kid a Blanket, helping provide warm pyjamas and essential winter items to children and families across Auckland.

Many readers will already know of the incredible work carried out by co-founders Bernie and Turtle and their dedicated

volunteers. Every day they support children and families across Auckland by providing blankets, warm clothing and other essential items to those facing hardship. Their compassion and commitment have helped thousands of Aucklanders over the years.

The pyjama collection is being organised by Gabrielle (Gabs), Publication Manager for the Kumeu Courier and The Westerly. Passionate about supporting local community initiatives, Gabrielle launched the collection to help meet the growing demand for warm sleepwear this winter. Thanks to the generosity of local residents and businesses, along with a discount from Postie Plus, the first bulk order of pyjamas was recently purchased and delivered to the charity.

A special thank you goes to Graham McIntyre, owner of the Kumeu Courier and The Westerly whose generous contribution helped make the first delivery possible. Graham joined Gabrielle on the recent visit to Give a Kid a Blanket, where the donations were gratefully received.

While the first delivery was a great success, there is still a need for more. The sizes currently most in demand are:

- Baby sizes 1 and 2
- Boys' sizes 4, 6 and 10
- Teen boys' and girls' sizes 14 and 16

New pyjamas can be donated throughout July and dropped off at:

- Raine & Horne, 327 Main Road, Kumeu
- West Auckland Property Management, 2 Clark Road, Hobsonville

I would like to sincerely thank everyone who has already contributed. Whether you donated pyjamas, made a financial contribution or helped spread the word, your support is helping children and families stay warmer this winter.

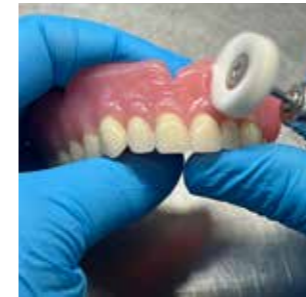
Looking ahead, we will also be launching a Community Giving Campaign in August. Funds donated by local

businesses will be matched by the Kumeu Courier and The Westerly, up to a combined total of \$1,000. Working directly with Give a Kid a Blanket, we will purchase the items most urgently needed and ensure support reaches those who need it most.

Together, our community continues to show that even small acts of kindness can make a big difference. Thank you to everyone who has supported this initiative so far.

Photo: (from L) Graham McIntyre, Turtle & Gabs

DT Denture Clinic



Looking after your new dentures

Your new dentures are an investment in your smile, comfort, and confidence. With the right care, they can continue to look and feel great for many years to come. Following a simple daily routine will help keep your dentures

clean, comfortable, and functioning at their best.

Cleaning your dentures - Dentures should be removed and rinsed after every meal to help prevent food and plaque build-up. If you still have natural teeth, continue cleaning them as advised by your dentist.

When brushing your dentures, always use a soft brush. Hard-bristled toothbrushes can scratch and damage the denture surface over time. We recommend cleaning your dentures with liquid soap, or a denture cleaner such as Polident. Be sure to rinse them thoroughly before placing

them back into your mouth.

We recommend removing your dentures overnight, it is important to keep them moist to prevent distortion or drying out. Soak your dentures in warm water with a mild baking soda solution (approximately half a teaspoon in a glass of water) or use a denture soaking solution such as Polident.

Avoid using toothpaste on dentures, as it is abrasive and can overtime wear down the acrylic surface, causing unnecessary damage.

Professional denture clean - Over time, dentures can develop a build-up of plaque, calculus, and staining that cannot always be removed with regular home cleaning. A professional denture clean helps restore the appearance and freshness of your dentures while maintaining their long-term condition.

Our professional denture cleaning service takes approximately 2 hours and includes a deep-cleaning process followed by a professional polish to help restore a smooth, clean finish.

Ongoing care - Your mouth naturally changes shape over time, which may affect how your dentures fit. Regular dental or clinical reviews are important to ensure your dentures continue to fit comfortably and function correctly.

If your dentures become loose, uncomfortable, damaged, or difficult to wear, contact your clinician for advice. Early attention can often prevent more significant problems later on.

Contact DT Denture Clinic for a free consultation 09 4165072

Cat lovers - we need your help



The NZ Cat Foundation operates a sanctuary in Huapai that is home to more than 150 rescued cats. Our sanctuary provides a safe, lifelong haven for older, disadvantaged, and unhomeable cats, allowing them to live out their lives in comfort, security, and with the care they deserve.

Volunteers play a vital role in helping us maintain the sanctuary and ensure our cats enjoy happy, healthy lives. We are always looking for reliable and compassionate volunteers who are responsible, work well as part of a team, and have a genuine love of animals.

Volunteering at the sanctuary is also an excellent way to complete community service requirements for programmes such as the Duke of Edinburgh Award, St John, Scouts, Guides, church groups, university placements, animal science studies, and more. We are happy to verify and sign off volunteer hours as required.

As a charity, we rely heavily on the support of volunteers

DT DENTURE CLINIC
DENTURE SERVICES AND REPAIRS

**Dentures Loose?
Trouble Eating?
Broken Smile?**

**We offer full dentures, partial dentures,
same day relines, repairs & tooth additions**

Call for a FREE consultation

P: (09) 416 5072 67 Brigham Creek Road, Whenuapai
W: www.dtdentureclinic.co.nz

Community News

and urgently need more people to join our team.

We also gratefully welcome financial donations and contributions of cat food to help cover veterinary expenses and the ongoing costs of caring for our sanctuary residents. In addition, The NZ Cat Foundation supports community Trap-Neuter-Return (TNR) programmes and assists with feeding and caring for vulnerable cats living in the community.

To learn more about volunteering or making a donation, please visit our website at www.thenzcatfoundation.org.nz.

Winter Boat Service. Summer Sorted.



For many boat owners, winter is when the boat gets parked up and forgotten about until the first good weekend of spring.

But that's often when problems start.

While your boat is sitting idle, moisture can creep into fuel systems, batteries slowly lose

charge, salt continues to corrode moving parts, and steering systems can begin to seize. In fact, many of the breakdowns we see during summer started months earlier during winter storage.

That's why winter is the ideal time to get on top of servicing and repairs. Not only are you less likely to want to use your boat, but workshops are generally quieter. That means technicians have more time to thoroughly inspect your boat, check battery health, test electrical systems, and identify any issues before they become costly headaches.

If something needs fixing, you'd rather find out now than on the morning of a long-awaited fishing trip.

Between services, we also recommend carrying out some basic maintenance every six weeks, especially over the winter months. To make it easy, we've created a simple maintenance checklist to help keep your boat and motor in top shape - just go to gtmarine.co.nz/maintenance-checklist.

Summer will be here before we know it. Book your winter service now and head into summer knowing your boat is ready to go. Plus, if you book before 31 July, you'll get a \$50 GT Marine voucher to use in store, or on your next job.

Visit us at 156 Main Road, Kumeū and check out our expanded workshop and new Honda outboard showroom while you're here. Or call 09 412 8348 or visit gtmarine.co.nz to book a job.



FACTORY SPACE SHARING

I'm looking for premises to relocate my CNC Routing business. I need 250-300m² floor space.

I also need room to load/unload trucks and a reasonably wide roller door. Stand alone units typically don't have this hence I'm looking to share factory space with another business. Do you have spare room that could provide an income? I mostly work alone, just use contract labour when required. I have a portacom office but do need access to toilet facilities.

Call Mick on 0275 335 597
mick@cadcamnz.co.nz
www.cadcamnz.co.nz



Community News

Win a share of \$500 in Pak'nSave gift cards



Hi loyal readers!

You guessed it – we're back with another free giveaway!

This July, we're giving away a share of \$500 worth of Pak'nSave gift cards. Lucky readers will each win a \$100 gift card, which can be used for grocery or fuel at Pak'nSave.

We were blown away by the response to our recent BP voucher giveaway and as a thank you for continuing to support the Kumeu Courier and The Westerly each month, we've decided to do another giveaway.

To enter, simply:

- Email enter@freefuel.co.nz

- Include the code 7395

- Send your full name and contact phone number

LIKE the Facebook page of the publication you are entering through:

KumeuCourier

<https://www.facebook.com/KumeuCourier/>

TheWesterly

<https://www.facebook.com/thewesterly2015/>

Entries are open throughout July, with winners drawn at random at the end of the month.

Thank you for reading and supporting your local community newspapers.

Good luck!

This promotion is run by the Kumeu Courier and is not sponsored, endorsed, administered by or associated with Facebook or any other third party.

gtm
OUTBOARD MOTOR SPECIALIST

WINTER SERVICE BONUS

Book a boat service or repair by 31 July and get a \$50 GT Marine store voucher!



412 8348



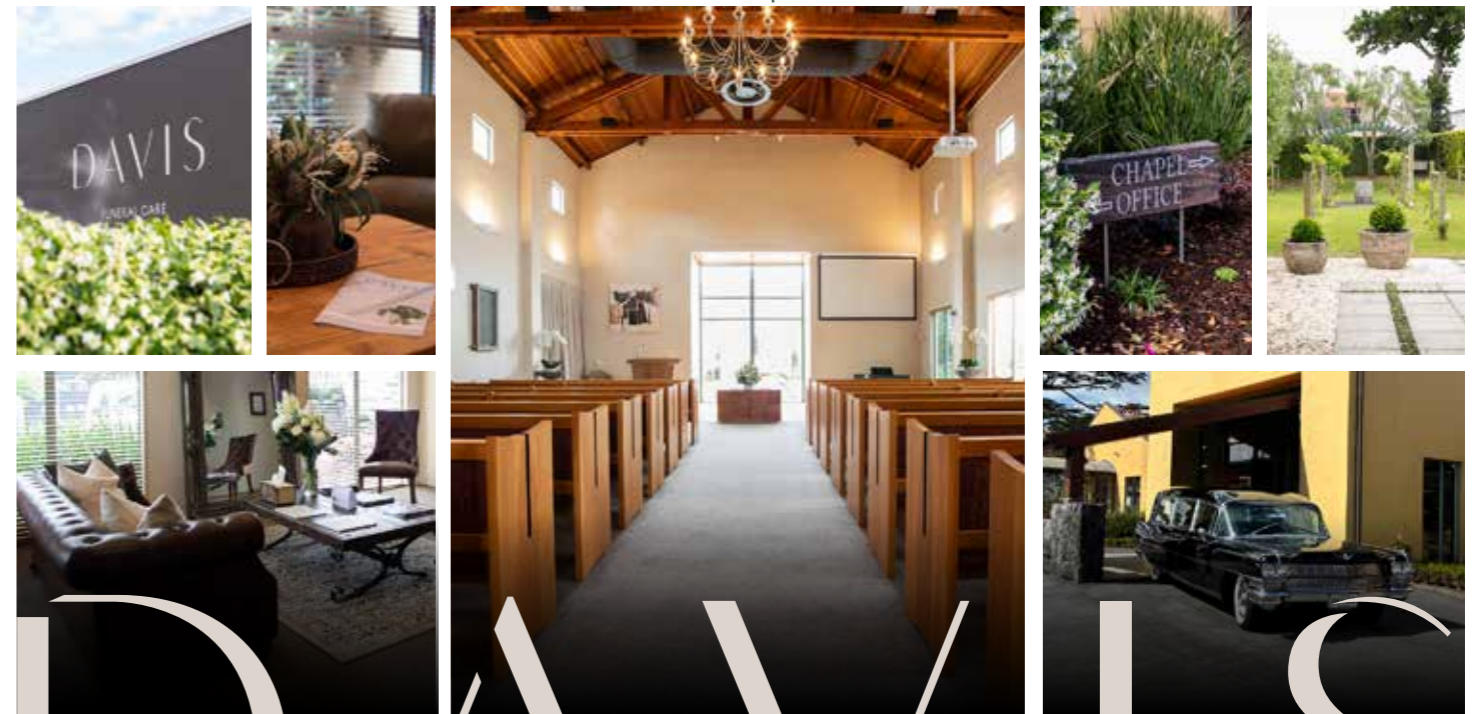
gtmarine.co.nz



156 Main Road, Kumeu



GT Marine - your local marine specialists



DAVIS
 FUNERAL CARE
 09 638 9026
DAVISFUNERALS.CO.NZ



Food & Beverage

Roasted Carrot & Cumin Soup

VEGETARIAN

Preparing time 15 mins

Cook time 1 hr 10 mins

Serves 4

Ingredients

Carrots, peeled, roughly chopped - 1 kg

Small onion, roughly chopped - 1

Olive oil - 2 Tbsp

Cumin seeds - 1 tsp

Dried chilli - 1/4 tsp

Salt

Freshly ground black pepper

Garlic, unpeeled - 2 cloves

Chicken stock - 5 cups

Potato, peeled, cut into 2cm cubes - 1

Thickened cream - 1/2 cup

Chopped chives, to serve

Sliced bread, toasted, to serve

Method

Step 1-

Preheat oven to 180°C (160°C fan-forced). Line a large oven tray with baking paper.

Step 2-

Arrange carrot and onion on tray. Drizzle with oil and sprinkle with cumin seeds and chilli. Season to taste.

Step 3-

Bake for 30 minutes. Add garlic and bake for a further 15 minutes.

Step 4-

Transfer vegetables to a medium saucepan with stock and potato. Squeeze garlic from skins and add to pan. Cook on high, until boiling. Reduce heat to medium and simmer for 10-15 minutes, until potato is tender.

Step 5-

Purée with a stick blender, until smooth. Season to taste. Stir in half of the cream and reheat to boiling point.

Step 6-

To serve, ladle into bowls with a swirl of the remaining cream on top. Sprinkle with chives. Serve with sliced bread on the side.

Credit

<https://www.woolworths.co.nz/recipes/dinner/2368/roasted-carrot-and-cumin-soup>



Everything you need to know about property

Property Hub



248 Main Road, Kumeū 0810

09 412 5371

www.gjgardner.co.nz/franchises/rodney-west



What's inside

19
24
28
41

Property News
Property Statistics
Property Market
Home & Garden



ENQUIRIES / FEEDBACK / ADVERTISING:
E editorial@kumeucourier.co.nz
W Property-hub.nz

COVER PHOTO: GJ Gardner Rodney West
PRINT RUN: 22,500 copies, Treehouse Print

Property Hub:

The benefits of building new

The Benefits of building new Buying a new-build home offers modern comfort, long-term savings, and peace of mind. Designed for contemporary living, new homes provide practical layouts, energy-efficient features, and the convenience of moving straight into a property that is ready to enjoy from day one.

One of the biggest advantages is access to potential financing incentives. Many lenders view new-build homes favourably, and eligible buyers may qualify for lower deposit requirements or other lending benefits. This can make homeownership more accessible and reduce upfront costs.

New homes are built to modern standards, with improved insulation, efficient heating systems, and energy-saving appliances. These features can help lower utility bills and reduce ongoing household expenses. Because everything is brand new, homeowners are also less likely to face costly repairs or maintenance issues in the early years of ownership.

A new-build property is designed with today's lifestyles in mind, offering functional floorplans, modern finishes, and spaces that suit the way people live and work. The move-in-ready nature of a new home means there is no need for immediate renovations or upgrades, saving both time and money.

In addition to lower maintenance and running costs, new homes often have strong appeal in the property

market. Their modern design, energy efficiency, and contemporary features can help support future resale value and attract potential buyers when it comes time to sell.

For many buyers, a new-build home represents more than just a place to live. It is an investment in comfort, convenience, and long-term value. With lower maintenance requirements, reduced energy costs, modern design, and potential financing advantages, a new-build home offers a practical and attractive solution for those looking to secure their future while enjoying the benefits of a brandnew property.

Having built many homes in the Parkview development, G.J. Gardner Homes brings proven experience and a commitment to quality. Our newly completed Urumaraki Heights Show home showcases our popular Island design, combining contemporary style, practical family living, and affordability. Featuring multiple living areas, spacious bedrooms, and a modern kitchen, the home offers comfort, flexibility, and lasting appeal through its timeless design and durable materials.

Whether you are seeking a relaxed lifestyle, outdoor recreation, or an authentic rural New Zealand experience, Helensville offers the perfect gateway to Auckland's thriving northwest region, with a blend of country charm and the comforts of modern living

Known for its many attractions and abundant amenities, this elevated and historic area has so much to offer.

Come talk to GJ's about Helensville now, where lifestyle and affordability live side by side..



West Auckland Property Management – your local property managers



Proudly serving West Auckland with professional property management, genuine relationships, and a commitment to our community.

At West Auckland Property Management, we believe property management is about so much more than collecting rent,

organising maintenance, and conducting inspections. It's about people, relationships, trust, and being part of the community we proudly call home.

As a locally owned and family-operated business, we're passionate about helping property owners protect and grow their investments while creating positive rental experiences for tenants. We understand that every landlord, tenant, and property is unique, which is why we take a personalised approach to everything we do.

Our clients are never treated like just another number. We take the time to understand your goals, communicate openly, and provide support every step of the way. Whether you're a first-time landlord, an experienced investor, or a tenant looking for a place to call home, our focus is on building genuine relationships and delivering exceptional service.

Proudly West Auckland

West Auckland isn't just where we work—it's where we live, raise our families, support local businesses, and contribute to our community.

Our team has deep roots throughout West Auckland, from Hobsonville and Kumeū to Massey, Henderson, Te Atatū, and beyond. We know the schools, parks, shops, sporting clubs, and local communities because we're part of them ourselves.

We love supporting local businesses, local charities, community groups, schools, and sporting organisations. We believe strong communities are built through strong relationships, and we're proud to play our part in helping West Auckland continue to thrive.

More than property managers

We don't just manage properties—we help people navigate their property journey.

Our comprehensive property management service includes:

- Professional tenant selection and screening

- Rent collection and proactive arrears management
- Routine property inspections
- Maintenance coordination and contractor management
- Healthy Homes and legislative compliance
- Detailed owner reporting and communication
- Water and utility management
- End-to-end tenancy management
- Professional marketing and tenant placement

Most importantly, we provide peace of mind.

As property owners ourselves, we understand how important your investment is. We treat every property as if it were our own and take a proactive approach to protecting your asset, maximising returns, and ensuring your tenants feel supported.

Communication is everything

One of the things our clients value most is our commitment to communication.

We understand that everyone communicates differently, so we tailor our service to suit your needs. Whether you prefer phone calls, text messages, emails, WhatsApp, or Messenger, we'll communicate in a way that works best for you.

We believe there should never be surprises when it comes to your property. Our landlords stay informed, our tenants feel supported, and our team remains accessible whenever advice or assistance is needed.

Building relationships that last

Property management is ultimately a people business.

Whether we're helping a landlord grow their portfolio, supporting a tenant through life's challenges, or working alongside trusted local tradespeople, our goal remains the same: to build long-term relationships based on trust, respect, communication, and genuine care.

We believe the best outcomes happen when people feel supported, listened to, and valued.

Meet the team

Led by owners Gail and Graham McIntyre, our team combines local knowledge, industry expertise, and a shared commitment to outstanding customer service.

Senior Property Relationship Manager Sarah Ball brings more than 15 years of property management experience and is passionate about helping clients achieve the best outcomes for their investments.

Property Relationship Manager Aria brings energy, enthusiasm, and a people-first approach, helping landlords and tenants navigate their property journey with confidence.

Accounts Manager Tracey is the heart of the business behind the scenes, ensuring everything runs smoothly while supporting both clients and the wider team.

Together, we're committed to delivering property management that is professional, proactive, personal, and relationship focused.

West Auckland proud

We're proud to call West Auckland home and honoured to support the people who make it such a special place.

Whether you're looking for trusted property management advice, searching for a new home, or wanting to maximise the performance of your investment property, we'd love the opportunity to help.

Because at West Auckland Property Management, you're not just another property in a portfolio—you're part of our community.

West Auckland proud. Family-owned. Relationship focused. Personally invested.

Sarah Ball
Senior Property Relationship Manager

Country Living Realty (Hobsonville) Limited
a West Auckland Property Management

027 499 8415
office@wapm.co.nz
wapm.co.nz

2 Clark Road
Hobsonville, Auckland

Relationship property



When a relationship ends, sorting out property can feel overwhelming. Understanding the rules and timeframes under the Property (Relationships) Act 1976 can help make the process clearer.

There are two main ways to resolve relationship property matters: privately (by agreement) and through the Family Court. A private agreement often involves lawyers drafting a formal settlement agreement. Even when resolving matters privately, the principles of the Act still apply, and statutory

**Commercial, Disputes.
Full Service Legal.
Local Heart.**

smith
AND PARTNERS
LAWYERS

smithpartners.co.nz
09 836 0939

entitlements and processes must be considered to ensure the agreement is legally valid and enforceable.

If agreement cannot be reached, either party can apply to the Family Court for orders dividing property under the Act. The Court will apply the statutory principles, including a presumed equal sharing of relationship property unless certain exceptions apply.

Understanding the time limits

The time limit for applying for the Court's assistance depends on the nature of your relationship.

If you and your partner were in a qualifying de facto relationship, you have 3 years from the date of separation. If you were married, you have 12 months from the date of your divorce, also called a dissolution. Acting within these limits helps avoid complications and keeps things moving forward.

These timeframes apply to Court applications only. Parties can still reach their own agreement outside of Court after these timeframes, provided the agreement is properly documented.

What happens if you miss the deadline?

If you do not apply to Court within the relevant timeframe, you may lose the right to have the Court determine your relationship property division. The Court can grant permission to apply out of time in limited circumstances, but only where not doing so would cause serious injustice. This can be a high threshold, so it is safer to seek advice early.

Don't leave it too late

If you've recently separated, we invite you to become a client of Smith and Partners. Contact Natalie Miller at natalie.miller@smithpartners.co.nz or phone 09 837 6843 to discuss your relationship property options early.

KEMP BARRISTERS & SOLICITORS
your local team of legal experts

- Property Law
- Litigation
- Family & Relationship Law
- Wills & Estates
- Commercial Law
- Trust & Asset Protection

info@kempsolicitors.co.nz
09 412 6000
25 Oraha Road Kumeu

Mortgage Market Update:

What homeowners should know right now

If you've been keeping an eye on the news lately, you've probably seen plenty of headlines about interest rates, inflation, the property market, and ongoing economic uncertainty. While it's easy to get caught up in the noise, there are still opportunities for homeowners who take a proactive approach.

The Reserve Bank recently announced that the Official Cash Rate (OCR) will hold at 2.25%. While there was no increase, the announcement carries a strong message about where interest rates could be heading next.

At the same time, the property market appears to be in a more balanced phase. Recent Cotality data shows that the national median property value remained unchanged in May at \$808,187. Here in West Auckland, the median property value is \$910,416.

So what does this mean for you?

The good news is that there is still time to get ahead of any potential changes.

- If your mortgage is due to come off its fixed rate in the next 3 to 6 months, now is an ideal time to review your lending and explore your options.

With a balanced property market, buyers and sellers can make more considered decisions without the pressure of rapid price movements experienced in recent years. Rather than trying to predict where interest rates or house prices will go next, focus on making sure your mortgage is set up to support your goals. The key message from us: Don't panic, but don't ignore it either.

And this is where a mortgage adviser can help.

As a local mortgage adviser, I work for you, not the bank. I compare lenders, negotiate on your behalf, and help navigate the process from start to finish. More

importantly, I work alongside my clients to create a lending strategy that supports their goals and adapts as life changes.

Call Ben Konings - Your Local Mortgage Adviser
0204 1122 481 - ben@mortgagesupply.co.nz

Experience matters in today's property market



After years of unprecedented growth, New Zealand's property market has entered a new phase—one defined by opportunity, careful decision-making, and the value of expert guidance.

Driven by higher interest rates and a significant increase in housing supply, property prices now sit approximately 22-30 percent below their post-pandemic peaks. When adjusted for inflation, the picture is even more striking, with house prices nationally returning to levels last seen in 2016. Auckland and Wellington have experienced even larger corrections, with inflation-adjusted declines of 37 percent and 39 percent respectively.

For buyers, particularly first-home buyers, this presents some of the best opportunities seen in years. A surge in listings, reduced competition, and less pressure in auction rooms mean purchasers have greater choice and more negotiating power than at any time in recent memory.

Yet despite these favourable conditions, market sentiment remains cautious. Properties are taking longer to sell, buyers are increasingly selective, and value has become the driving force behind purchasing decisions.

Homes that are well-presented, move-in ready, and located in desirable neighbourhoods or sought-after school zones continue to outperform the wider market and attract consistent interest.

According to leading property economists, values remain largely stable, with neither buyers nor sellers in a hurry to make dramatic moves. In a market where timing, pricing, and strategy can significantly influence outcomes, local knowledge and experience have never been more important.

That's where Graham McIntyre stands apart. For more than 20 years, Graham has been helping buyers and sellers successfully navigate changing market conditions. Through property booms, downturns, and everything in between, he has built a reputation for trusted advice, exceptional service, and results-driven expertise.

His deep understanding of local market trends, buyer behaviour, and effective sales strategies allows clients to make informed decisions with confidence. Whether you're purchasing your first home, upsizing for a growing family, downsizing, or considering selling an investment property, Graham's experience provides a valuable advantage. In a market where every decision matters, having a proven professional by your side can make all the difference.

If you're considering your next move, the conversation starts with understanding your options. Graham is always happy to share his insights, discuss current market conditions, and help you develop a strategy to achieve your property goals.

Call or text Graham McIntyre today on 027 632 0421 for a no-obligation chat about your next property move.

Good Neighbours, Better Decisions:

Rethinking Consent in Cross-Leases

A cross lease is a common form of property ownership in New Zealand where multiple parties jointly own the land and lease their respective homes from one another, typically for 999 years. The lease usually requires an owner



to obtain their neighbour's consent before carrying out alterations, particularly where the building footprint changes. This requirement often gives rise to disputes about when consent can reasonably be withheld. A recent decision in *Liow v Martelli* [2026] NZCA 101 considers this issue and provides useful guidance for cross-lease owners. The case

addressed a common source of tension in shared ownership arrangements: when can a neighbour lawfully refuse consent to proposed alterations?

Importantly, the Court emphasised that cross-leases are cooperative, long-term arrangements. Owners are expected to engage constructively with one another and approach consent requests with an open mind. Where proposed alterations are relatively common for comparable properties and have only limited impacts on neighbouring owners, it may be difficult to justify a refusal.

However, the Court also recognised that there are circumstances where withholding consent will be reasonable. Examples include alterations that materially affect privacy, sunlight, views, property value, future development potential, or rights protected by the lease itself. For cross-lease owners, the decision reinforces a simple but important principle: consent decisions should be guided by fairness, cooperation, and an objective assessment of the interests of everyone involved.

Give us a call on 09-973-5102 or make a time to come and see us at either our Kumeu or Te Atatu office if you need help updating your cross-lease flats plan or advice

CLEARSTONE

LEGAL

Call now to discuss your legal needs

p: 09 973 5102
w: cslegal.co.nz

Kumeu Office
1A Tapu Road, Kumeu

Te Atatu Office
1/547 Te Atatu Road
Te Atatu Peninsula

Your Local Mortgage Adviser

- First Home Buyers
- Property Investors
- Upsizing & Downsizing
- Repayment Strategies

THE
Mortgage
SUPPLY CO. LTD

Ben Konings

📞 0204 1122 481

✉ ben@mortgagesupply.co.nz

Real Estate. It's what we do.

0800 900 700

Raine & Horne®

rh.co.nz/kumeu

Country Living Realty Limited t/a Raine & Horne Kumeu - Hobsonville Licensed REAA2008

Area Property Stats

PROPERTY-HUB.NZ

25

Every month Raine & Horne Kumeu assembles a comprehensive spreadsheet of all the recent sales in the area that reviews the full range of Residential and Lifestyle transactions that have occurred. To receive the full summary simply email the word "full statistics" to office@kumeu.rh.co.nz. This service is free from cost.

SUBURB	STREET	CV	BED	FLOOR AREA m2	LAND AREA m2	SALE PRICE
Bethells Beach						
	Tasman View Road	\$890,000	3	106	1184	\$820,000
Helensville						
	Awaroa Road	\$860000	3	90	947	\$775000
	Cabeleigh Drive	\$870000	3	156	507	\$865000
	Kanono Way	\$1100000	4	175	502	\$1100000
	Karaka Street	\$700000	3	92	455	\$780000
	Miro Street	\$830000	3	125	885	\$860000
	Downer Street	\$980000	3	125	931	\$940000
	Awaroa Road	\$760000	3	98	620	\$550000
Hobsonville						
	Harvard Street	\$770000	1	78	94	\$729000
	Mapou Road	\$1250000	4	200	258	\$1285000
	Gecko Road	\$850000	3	101	119	\$817000
	Boundary Road	\$2400000	3	153	0	\$1500000
	Carder Court	\$950000	3	143	160	\$940000
	Scott Road	\$730000	2	88	0	\$650000
	Skua Road	\$1150000	4	173	217	\$1130000
	Mihi Lane	\$930000	4	125	0	\$905000
	Greenfinch Road	\$1200000	4	175	202	\$1115000
	Meteor Road	\$930000	2	150	0	\$970000
	Harbourside Parade	\$695000	2	94	137	\$695000
	Firebrick Way	\$425000	2	70	73	\$753000
	Hobsonville Point Rd	\$670000	2	75	0	\$630000
	Wallace Road	\$960000	0	119	0	\$866800
	Hobsonville Road	\$1230000	5	228	359	\$1220000
Huapai						
	Remana Crescent	\$1275000	4	210	606	\$1260000
	Trigg Road	\$1500000	4	245	1707	\$1560000
	Remana Crescent	\$1125000	3	155	503	\$1170000
	Tapu Road	\$820000	2	108	0	\$785000
	Matua Road	\$1150000	3	190	809	\$1045000
Kumeu						
	Vogwill Road	\$1750000	4	229	670	\$1590000
	Worrall Road	\$1805000	4	226	26000	\$1295000
	McIndoe Road	\$1300000	4	197	567	\$1310000
	Accolage Boulevard	\$1275000	4	162	539	\$1090000
	Konoba Avenue	\$1150000	4	183	428	\$1150000
	Tarras Road	\$1150000	4	191	400	\$1090000
	Konoba Avenue	\$1150000	4	148	180	\$889000
	Tarras Road	\$1150000	4	191	407	\$1200000
	Dysart Lane	\$1055000	5	356	10000	\$2695000
	Lewis Younie Road	\$1450000	5	254	727	\$1320000
	Broadwood Rise	\$2525000	4	337	10000	\$2200000
Massey						
	White Heron Drive	\$1125000	4	211	0	\$1050000
	Royal Road	\$740000	0	114	0	\$722500
	Garton Drive	\$747826	4	87	427	\$747826
	Hewlett Road	\$870000	3	120	711	\$773000
	Widmore Drive	\$1125000	3	190	702	\$825000
	Royal Road	\$750000	3	114	96	\$740000
	Kotiu Place	\$870000	3	98	183	\$795000
	Colwill Road	\$1225000	5	190	1169	\$1135000
	Don Buck Road	\$1150000	5	250	921	\$830000
	Baumea Rise	\$1325000	3	184	300	\$1135800
	Cyclarama Crescent	\$690000	3	110	0	\$720000
	Ginders Drive	\$790000	3	117	381	\$842000
	Don Buck Road	\$1400000	4	260	1332	\$800000
	Cyclarama Crescent	\$900000	4	122	850	\$810000
	Jadewynn Drive	\$1300000	4	192	890	\$1185000
	Horokaka Street	\$870000	3	91	210	\$765000

SUBURB	STREET	CV	BED	FLOOR AREA m2	LAND AREA m2	SALE PRICE
	McClintock Road	\$850000	3	132	473	\$775000
	Don Buck Road	\$1150000	5	170	900	\$840000
	Aldern Road	\$910000	3	110	550	\$850000
Muriwai						
	Oaia Road	\$1685000	4	240	13700	\$1350000
Parakai						
	Parakai Avenue	\$920000	4	270	1849	\$940000
	Pengelly Place	\$680000	2	90	0	\$610000
	Raabia Close	\$950000	4	209	983	\$1025000
	Springs Road	\$670000	3	88	0	\$610000
	Parakai Avenue	\$540000	3	95	506	\$565000
	Parkhurst Road	\$550000	3	65	0	\$550000
Riverhead						
	Maude Street	\$1125000	4	144	809	\$1501245
	Coatesville-rhead Hway	\$1155000	0	0	10400	\$1170000
	Lloyd Road	\$2630000	3	138	32300	\$2375000
	Turpin Road	\$1350000	3	197	601	\$1346800
Waimauku						
	Denehurst Drive	\$1450000	4	245	1000	\$1450000
	Fletcher Road	\$1925000	5	306	10000	\$1715000
	Cloverfields Drive	\$1400000	6	286	0	\$1645000
	Fletcher Road	\$1650000	4	140	10200	\$1481500
	Waimauku Station Rd	\$780000	3	102	1011	\$930000
Waitakere						
	McEntee Road	\$770000	3	66	1643	\$894000
West Harbour						
	Marina View Drive	\$1375000	4	190	681	\$1188500
	Fitzherbert Avenue	\$820000	3	110	258	\$785000
	Matisse Drive	\$1005000	4	140	0	\$1040000
	Hobsonville Road	\$605000	3	152	158	\$608000
	Marina View Drive	\$1375000	4	230	721	\$1475000
	Mako Street	\$1225000	3	220	669	\$1245000
	Hobsonville Road	\$970000	3	105	236	\$950000
Westgate						
	Westgate Drive	\$1075000	3	184	210	\$920000
	Mairehau St	\$540000	3	180	224	\$940000
	Whiteywood Street	\$910000	4	123	167	\$900000
Whanuapai						
	Totara Road	\$1075000	4	211	166	\$940000

DISCLAIMER: These sales figures have been provided by a third party and although all care is taken to ensure the information is accurate some figures could have been mis-interpreted on compilation. Furthermore these figures are recent sales over the past 30 days from all agents in the area.

Graham McIntyre on 027 632 0421

Country Living Realty Limited T/A Raine and Horne Kumeu - Hobsonville. Licensed REAA (2008).

Raine & Horne Kumeu also provide statistical data FREE from cost to purchasers and sellers wanting more information to make an informed decision. Phone me today for a FREE summary of a property and surrounding sales, at no cost and no questions asked. Graham McIntyre 027 632 0421 *Available for a limited time. Conditions apply.

Raine & Horne

This page is sponsored by Raine & Horne Kumeu - Hobsonville
Phone 0800 900 700 Country Living Realty Ltd Licensed REAA (2008)



Why West Auckland owners choose Sarah & Graham

The West Auckland rental market has undergone a significant shift over the past 12 months, creating both challenges and opportunities for landlords.

For tenants, the market has become increasingly favourable. A surge in available rental properties has given renters more choice and greater negotiating power, while landlords are finding properties take longer to lease than in previous years. Across West Auckland's established and rapidly growing suburbs, weekly rents generally range from \$550 to \$750, depending on property type, size, and location. While demand remains steady, the increase in rental stock means many listings now spend several weeks on the market—quite a change from the days when quality properties could be snapped up within a matter of days.

Median weekly rents across the region have softened slightly, sitting around the \$650 mark. As a result, landlords are becoming more flexible, recognising that securing a quality long-term tenant is often preferable to leaving a property vacant.

Current market trends show:

Apartments and units continue to attract renters seeking affordability and convenience, with weekly rents typically ranging from \$520 to \$620.

Modern townhouses, particularly in sought-after locations such as New Lynn, Hobsonville, and Westgate, are proving popular with professionals and young families, leasing for approximately \$590 to \$680 per week.

Family homes remain highly desirable, especially in established neighbourhoods. Three and four-bedroom homes generally command rents between \$700 and \$850 per week, depending on location and presentation.

While market conditions have changed, one thing remains constant: successful property investment relies on informed decisions and expert guidance.

That's where Sarah Ball and Graham McIntyre have become the trusted team many West Auckland property owners rely upon.

Backed by West Auckland Property Management's

outstanding 25-year reputation, Sarah and Graham combine local market knowledge, practical experience, and a commitment to delivering honest, timely advice. Whether you own a single investment property or manage a growing portfolio, they understand that every property owner has unique goals and challenges.

Their approach is simple: provide clear guidance, proactive management, and strategies designed to protect your investment while maximising long-term returns.

In a market where conditions can change quickly, having experienced professionals on your side can make all the difference.

If you're considering your options as a landlord, reviewing your current rental strategy, or simply wanting an up-to-date assessment of your property's position in the market, Sarah and Graham are always happy to help.

A conversation costs nothing, but the right advice could prove invaluable.



Sarah Ball -
027 499 8415



Graham McIntyre -
027 632 0421

Trusted local expertise. Proven results. Proudly serving West Auckland property owners for over 25 years.

Personalised Property Management Solutions

Residential rental property advice that's timely, accurate, and measured, to ensure your property gets the attention required. It's a process that builds on 25 years of success and succession.

Ph 09 832 0832



Win a share of \$500 in Pak'nSave gift cards!

Thinking about selling, renting or simply curious about your property's current value?

Book a free sales or rental appraisal with Graham McIntyre from Raine & Horne Kumeū-Hobsonville and West Auckland Property Management during July and you'll automatically go into the draw to win a share of \$500 in Pak'nSave gift cards, which can be used for grocery or fuel at Pak'nSave

A property appraisal gives you a clear, up-to-date understanding of your home's current market value based on recent local sales and current market conditions. It can be a helpful step whether you're planning ahead, making decisions about the future, or simply wanting to stay informed about where your property sits in today's market.

There is no obligation attached – it's simply a free opportunity to gain useful insight into your property and the local market, with the added bonus of going into the draw for the gift cards.

To arrange your free appraisal, contact Graham McIntyre:

-Email: graham@wapm.co.nz (please include your full address and phone number)

Facebook pages:

- Raine & Horne

facebook.com/RaineandHornekumeuHobsonville/

- West Auckland Property Management

facebook.com/westaucklandpropertymanagement/

Terms and conditions apply. Winners will be drawn at random at the end of the promotion period.



BUYING OR SELLING?
Property Lawyers from **\$899***
*Plus AML, GST & disbursements

Ph: 09 869 6120

LAND LAW
NZ PROPERTY LAWYERS

VODANOVICH
LAW

SALES & PURCHASE OF REAL ESTATE
RELATIONSHIP PROPERTY | BUSINESS STRUCTURES
POWERS OF ATTORNEY | WILLS & TRUSTS
COMPANY & EMPLOYMENT LAW

PLEASE CONTACT IVAN | ivan@vlaw.co.nz 09 412 8000
4a Shamrock Drive Kumeu, Auckland

Fast & Free Rental Appraisals

Residential rental property advice that's timely, accurate, and measured, to ensure your property gets the attention required. It's a process that builds on 25 years of success and succession.

PHONE:
09 832 0832
www.wapm.co.nz

West Auckland Property Management

Henderson Reeves
creating smart legal solutions

Property • Disputes • Family • Wills

Taina Henderson 027 537 9222
Shelley Funnell 027 537 9221
Amie Wallwork 021 421 336

www.hendersonreeves.co.nz



58 Turret Lane, Hobsonville

By Negotiation

Near new - Book to view - Available

Viewing this property is by appointment call Graham on 0276320421 to book a suitable time/day.

The perfect blend of indoor-outdoor flow with all the comforts of a high spec build. Don't be fooled, it's bigger than it looks offering uncompromised open plan kitchen,

dining, lounge alfresco with easy double stack slider opening to decking and storage shed.

Upstairs, two toilets, full bathroom and two generous bedrooms.

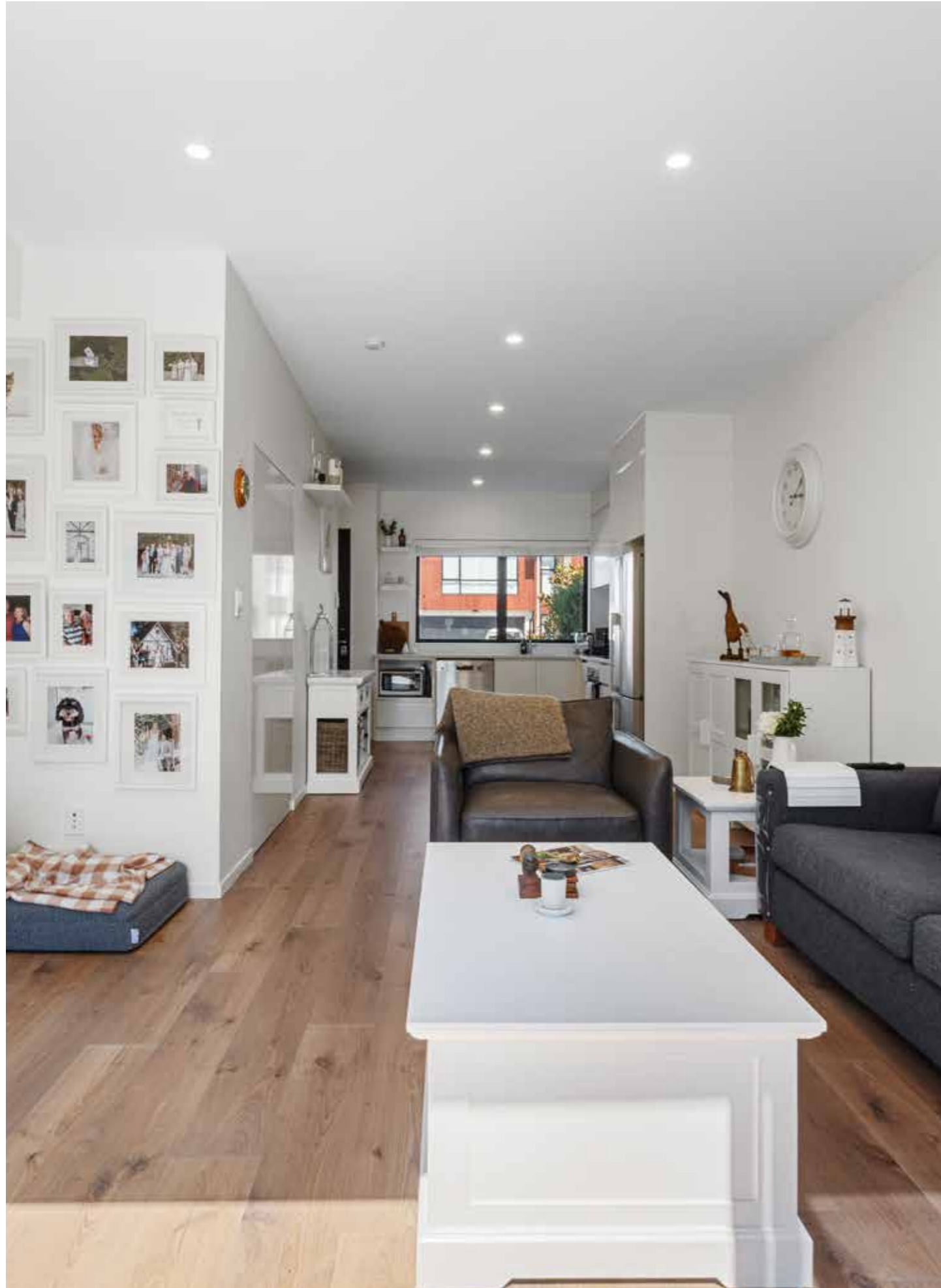
Exceptional build, earthy tones, carpet, tile and natural wood laminate, this home has been crafted and coloured to provide a seamless buy-move-in experience.

Motivate Vendors graduating North.



Featuring:

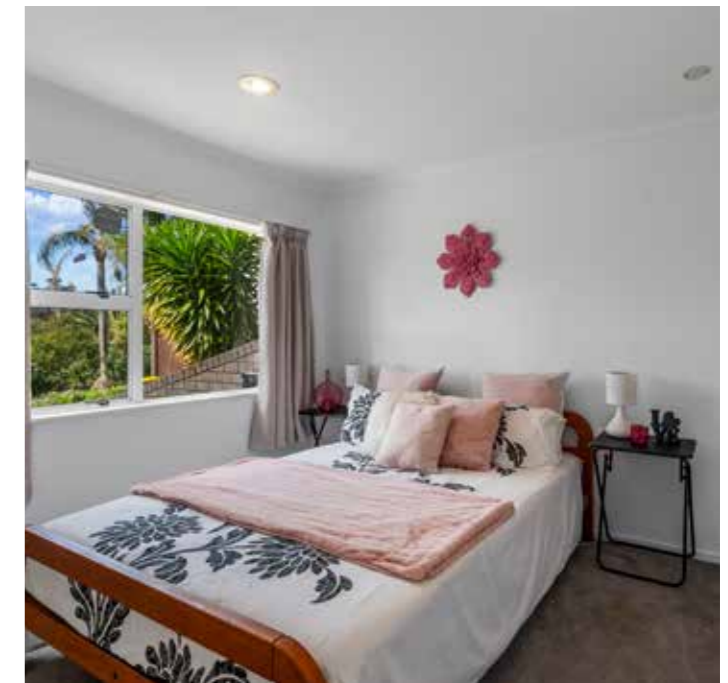
- Freehold
- Floor area 84 sqm
- Land area 99 sqm
- 2 Bedrooms
- 1 Bathrooms
- 2 Toilet
- 1 Living
- Townhouse



For more information on this property call:

Graham McIntyre on 027 632 0421
or email: graham.mcintyre@hobsonville.rh.co.nz

Country Living Realty Limited T/A Raine and Horne Kumeu - Hobsonville. Licensed REAA (2008).



1/16 Sailfish Drive, West Harbour

Asking Price \$759,000

Location, Location - Renovation

A compelling option for experienced buyers wanting to secure a sought-after location, this lovely bright three bedroom home presents as a project with the potential to add value over time - whether you're seeking a solid return on investment, or a long-term family home base whilst carrying out renovations.

Positioned in a quiet leafy cul-de-sac, just a short stroll to the local primary school, marina and commuter ferry and with bus stops, shops and cafes close to hand, this duplex home offers immediate comfortable living today for buyers with a considered longer-term outlook.

For more information on this property call:

Graham McIntyre on 027 632 0421 or you can email: graham.mcintyre@hobsonville.rh.co.nz

Country Living Realty Limited T/A Raine and Horne Kumeu - Hobsonville. Licensed REAA (2008).





Featuring:

- Three bedrooms - Master with ensuite and walk-in wardrobe
- Two bathrooms and three W/Cs
- Open-plan living with seamless flow
- Office work space
- Sun-filled alfresco living from dawn to dusk
- Double garage and off-street parking
- Basement workshop and extra storage
- Cul-de-sac location
- Cross-lease freehold title



NEW SHOWHOME COMING SOON

47 Urumaraki Avenue, Helensville

Opening Saturday 11th July

09 412 5371 / gjgardner.co.nz

G.J. Gardner Homes are acknowledged for their innovative design concepts. Our designers are continually coming up with fresh ideas and creative living plans. Here's your chance to view some of their latest ideas incorporated into this stunning showhome.

If you're thinking of building and are looking for ideas and inspiration, make this your first step.

G.J. Gardner. HOMES



38 Vinistra Rd, Kumeu

Upbeat Urban Family Living at Its Best in Huapai

This ultra-modern, single-level, award-winning home offers the perfect blend of comfort, style, and smart design. Surprisingly spacious, with 3 bedrooms and 2 bathrooms, this beautifully appointed home promises a true "wow" factor from the moment you arrive.

If you are a discerning buyer looking for a cleverly designed, well-constructed home finished to a high standard, 38 Vinistra Road deserves to be at the top of your list. Warm timber pavilions welcome you into this light-filled, architecturally designed home, where high raked ceilings create a sense of space and elegance throughout the open-plan kitchen and living area. The seamless indoor-outdoor flow is a standout feature, with a wrap-around hardwood deck connecting effortlessly to both the master suite and secondary bedroom – perfect for entertaining or simply relaxing in the sun.

For more information on this property call:

Graham McIntyre on 027 632 0421 Country Living Realty Limited T/A Raine and Horne Kumeu - Hobsonville. Licensed REAA (2008).



Featuring:

- Freehold
- Floor area 162 sqm
- Land area 472 sqm
- 3 bedroom
- 2 bathroom
- 2 garage
- Gold award winner 2021





We're hiring

Sales Agent

Minimum 2 years experience

Country Living Realty Limited t/a Raine & Horne
Kumeu-Hobsonville Licensed REAA (2008)
Contact: Graham McIntyre 027 6320421

Raine & Horne



Home & Garden

Quality storage and affordable prices



Life has a way of outgrowing our spaces. Whether it's a growing family, a move in the making, downsizing, renovating, or simply not wanting to part with treasured belongings, most of us reach a point where we need a little extra room.

That's exactly why we love what we do at Country Lane Storage.

We provide a clean, secure and easy-to-access place where you can store things that matter to you. You pack your unit yourself and secure it with your own lock, so only you have access. It's your space, on your terms. With a range of unit sizes available, you can rent for the short term or settle in for longer – whatever suits your situation.

Our facility has an interesting story. In its earlier days, the site was a poultry farm. Today, it has been transformed into a modern, purpose-built storage facility with more than 75 units. While the buildings have changed, the sense of practicality and hard work behind the property remains the same.

As a privately owned, family-run business with over 20 years in the storage industry, we understand that people aren't just storing "things." They're storing furniture from

a first home, business stock, family heirlooms, sporting gear, or belongings tied to important life moments. That's why we focus on maintaining a tidy, secure environment you can confidently visit any day between 7am and 7pm.

We're proud to be part of our local community and to support the Westpac Helicopter Trust, an organisation that plays such a vital role for families across our region.

We are also members of the Self Storage Association of Australasia, promoting high standards and professionalism within the industry.

If you're feeling a little short on space, we'd love to help. Feel free to phone Elizabeth about your storage needs on 0274995471.



- Caravan Upgrades
- Led lighting
- Interior Painting
- Solar Instalattions
- De-cal Replacement
- Leaks - Repairs
- Exterior Re-sealing
- Maintenance Repairs
- Chassis Undersealing
- Upholstery

021 117 2954

875 Waitakere Road,
Kumeu,
Auckland

QUALITY STORAGE
— at affordable prices —

0274 995 471
info@countrylanestorage.co.nz
www.countrylanestorage.co.nz

BLACKOUT
ELECTRIC

www.blackoutelectric.co.nz
info@blackoutelectric.co.nz
022 500 5856

Laser Plumbing & Roofing Whenuapai



Winter is here and the temperature is certainly starting to dip. Winter brings the magic of roaring fires, warm soups, and cosy nights in – but it also comes with wetter days and chilly temperatures. So, how can you be plumbing smart this winter?

Hot water cylinders - There's nothing worse than waking up to no hot water on a cold winter morning. Make sure your hot water cylinder is heating efficiently and showing no signs of leaking. Even a small drip can lead to dampness, water damage, and wasted energy.

Gutters - Blocked gutters are one of the most common causes of roof leaks during winter. Clear away leaves and debris regularly so rainwater can flow freely and safely away from your roof and foundations.

Drains - Slow-draining showers, sinks, or basins can be early warning signs of a blockage. Don't forget to check outdoor drains too – backed-up drains can quickly lead to flooding during heavy rain.

Leaky taps & toilets - A dripping tap or leaking toilet may seem minor, but over time they can waste a surprising amount of water – and increase your water bill. Check both indoor and outdoor fixtures for leaks and repair them before they turn into costly problems.

A little maintenance now can help prevent bigger plumbing headaches later – and keep your home warm, dry, and comfortable all winter long.

We have an experienced team of plumbers, roofers and drainlayers who can help with any of these issues. We

offer no obligation quotes, so give us a call today.

From plumbing through to roofing, drainage, gas, and pumps and drain unblocking, we can offer total solutions.

Contact Laser Plumbing & Roofing Whenuapai today for all your service needs on 09-417-0110 or whenuapai@laserplumbing.co.nz

How to spot drain problems early

Most homeowners don't think much about what's happening underground... until something goes wrong. A blocked drain, overflowing gully trap or slow-running toilet can quickly turn from a minor inconvenience into an expensive and unpleasant problem. That's where underground CCTV inspections come in.

CCTV drain inspections involve sending a specialised camera through underground pipes and drainage systems to identify issues that can't be seen from the surface. It's one of the most effective ways to understand the condition of a property's drains without needing to dig or guess.

For many homeowners, a CCTV inspection is first considered when there's already an issue. Common warning signs include:

- Recurring blocked drains
- Bad smells around the property
- Slow-draining sinks, showers or toilets
- Gurgling sounds in pipes



SOLVE YOUR SUMMER STENCHES!

Our friendly and professional wastewater team can help you with:

- Irrigation field remediation
- Wastewater treatment system services
- Septic tank empties and services
- Septic tank inspections for council

Our fleet of vans are fully equipped with stock and tools to allow our techs to tackle virtually any task on site and, if not, we can usually source the required parts within 24-48 hours.

Call for any wastewater enquiries - we know our stuff!

0800 493 768
www.hydrovac.co.nz



- Pooling water outside
- Overflowing gully traps during heavy rain

In these situations, a camera inspection can quickly identify the cause – it might be tree roots, cracked pipes, grease build-up, collapsed sections or foreign objects lodged in the line. Rather than repeatedly treating the symptoms with chemicals, CCTV helps pinpoint the real problem so it can be properly

resolved.

But CCTV inspections aren't only useful when something has gone wrong. Many homeowners now use them as a preventative maintenance tool to check the overall health of their drainage systems before major issues develop. Older homes in particular can benefit from routine inspections, as ageing pipes may deteriorate over time without obvious warning signs above ground.

A CCTV inspection can also be worthwhile:

- Before purchasing a property
- Before subdividing
- After major storms or flooding
- Before landscaping or renovation work
- If large trees are growing near drainage lines
- As part of routine property maintenance

Regular drain flushing combined with CCTV inspections is another smart way to keep systems operating properly. High-pressure water jetting can remove grease, silt, wipes and debris before they turn into stubborn blockages, while the camera confirms the pipes have been thoroughly cleared and checks for any underlying damage.

For local CCTV operators who know what they're doing, please get in touch with the HydroVac team on 0800 493 768 or service@hydrovac.co.nz

Waimauku Garden Club

For our May Garden Club trip we boarded the coach to have an announcement that our planned trip to Gellert Nurseries had been canceled due to several of the staff being unwell. But never fear, our wonderful committee came to the rescue with plan B – the Botanical Gardens which was such a treat. On arrival we had morning tea at their lovely Cafe followed by an introductory talk from one of the staff, before venturing out to look at some parts of the vast grounds. We got to enjoy the perennial beds which were bright and colourful, the edibles also herbs and a few of the sculptures but you need hours to venture the vast trails. On Thursdays they have plants

for sale so we were able to make some purchases. We headed off to the Hidden Cafe off the main road to enjoy lunch together in their peaceful environment. Following that we visited Joy Plants proprietors Terry and Pam Hatch and manager Lindsey Hatch have been operating Joy Plants for over thirty years. The nursery is situated within their gardens, truly a working garden that holds some unique treasures. We were able to purchase plants there as well so everyone went home happy.

Feel free to contact any of the committee: Ann (0210357406), Gail (021344070), Maree (0274963006), Moira (027498154), Monique (021646220), Sandi (0273184514)

Whenuapai Floral and Garden Circle



While the Garden Club is in recess for winter, it is worth mentioning the Birthday Lunch held recently at Huapai. The food, the conviviality and the service provided by the Huapai Golf Club apparently combined to make a very pleasant afternoon.

Special thanks to Pam and Judy for their planning of the event.

Unfortunately, my husband and I were unable to attend due to a prior appointment which required parking near Norwest Mall in an area which was previously free parking but has changed without our awareness of that fact. We only realised when the SEVENTY DOLLAR FINE arrived the following week in the mail. We had no idea things had changed. The parking down the lower end of Maki Street near Farmers had changed from free to pay a while back but who was to imagine the powers that be would change the rest? Surely some yellow paint on the space with a P could have been done to give a warning. So be aware, everybody.

With sadness, the passing of Colleen Nixon, a long serving member of the club was announced to members. The second of the Beaumont twins, after Betty Struthers, together over the years they had supplied many thousands of plants and seedlings to the Trading Table. The women belonged to the family that began Nga Rakau Nurseries and were also part of our Garden Club family almost from its beginning.

If you would like to know more about our Club, and wish to join us, please phone Judy Garrity on 8335592. Meetings are held at 1 p.m. at 41 Waimarie Road, Whenuapai Village, on the second Thursday of the month with trips usually on the fourth Thursday. Please note our next meeting is in September.

Until next time, happy gardening from Mary Anne Clark



Plumbing & Roofing
Laser
Whenuapai

- ✓ Plumbing Maintenance & Servicing
- ✓ Complete Roofing Services
- ✓ Renovations Plumbing
- ✓ Drainage Projects & Maintenance
- ✓ Gas Fitting & Maintenance
- ✓ New Builds Plumbing
- ✓ Backflow Testing
- ✓ 24/7 Emergency Plumbers

Proudly providing reliable, affordable plumbing, roofing and drainage services to our community for over 40 years!

CONTACT US

☎ 09 417 0110

✉ whenuapai@laserplumbing.co.nz

How to Choose a Reliable Painter:

Start with the Bathroom

With so many painting companies out there, finding a reliable painter can be difficult. While online reviews and recommendations are helpful, they don't always tell the full story.

That's why we recommend starting small—by painting the bathroom first.

Although it's often the smallest room in the house, it's also one of the most demanding. Humidity, temperature changes, and mould make bathrooms the first place where paint problems usually appear. If a painter can achieve a durable, high-quality finish in a bathroom, it's a good indication of the quality you can expect throughout the rest of your home.

At Focus On Painting, we've completed hundreds of bathroom repaints using a professional system that focuses on proper preparation and long-lasting results.

As an added bonus, we are currently offering 15% off all interior painting work this winter. This includes bathroom painting, wallpaper removal and skim plastering, GIB stopping and plastering, and full interior repaints. You'll receive the same premium workmanship and quality Dulux and Resene products at a reduced price.

Start with the bathroom—it could be the smartest first step to a beautifully painted home.

To see recent projects and customer reviews, visit facebook.com/focusonpainting. Free quotes are available.

Call or text Brad on 021 756 890 or email focusonpainting@gmail.com.





ANDREW SHONE
CARPENTRY & BUILDING SERVICES

OUR SERVICES

- Small alterations
- Fencing
- Decking
- General Building repairs

Free quotes

Ph 021 999 542 or 412 6213 Email shonebuilder@xtra.co.nz

15% OFF Interior Painting Job*

HOUSE PAINTING

INTERIOR / EXTERIOR / ROOF

FREE QUOTE & 3 YEAR WARRANTY*

*Conditions Apply



Brad 021 756 890

focusonpainting@gmail.com

[focusonpainting](https://facebook.com/focusonpainting)

Did you know?



Aucklanders face a 7.2% increase in household water and wastewater charges, effective July 1.

Winter = rain. Are you making the most of all that free water? Install additional water storage now, call for your free quote. Found a better tank price? Let us know.

We're committed to offering great value and competitive pricing. Heavy rain is also the perfect reminder to check your gutters and drains. Heavy downpours causing mayhem? Gutters overflowing? A simple clean-out can help prevent blockages, overflows, and costly flood damage

Our experienced team can inspect your existing drainage system and identify the cause of poor water flow, providing practical solutions to ensure water goes down the pipe - not over it

This is what we specialise in:

- Solving those frustrating drainage issues that cause decks to rot, create slippery hazards which send you skating, and allow slime and moss to take over your outdoor living areas. Whether it's overflowing gutters, blocked drains, or persistent ponding water, we'll find the cause and get it sorted.

- Is your hot water cylinder overflow dripping? Don't ignore it. A continuously dripping overflow pipe can waste a significant amount of hot water, causing your hot water cylinder to work harder and increase your power bill.

- Tiny home septic pump stations - we move Grannie's poos

Smart ways to save this winter:

- Fix small leaks early, they quietly add up fast on the power bill
- Slow drains are an early warning sign
- Know where your isolation valves are, quick shut-off can prevent serious damage
- Check outdoor taps, hot water overflows, toilets, and



KPL
HUMEU PLUMBING LTD
EST 1974

Ph. 09 420 9108
Email. info@kpl.co.nz
Shop online www.kpl.co.nz

plumbing

gas fitting

woodfires

drainage

pumpshop

solar heating

roofing

water filtration

pool & spa

156 Main Road, PO Box 128, Kumeu, Auckland 0841

pipes for hidden leaks

If all of the above fails, contact the team at KPL. We're here to help with expert advice, inspections, and practical solutions. From new plumbing fitouts, plumbing maintenance, specialist water pump technicians, drainage solutions, new roofs and roof repairs, fabrication of made-to-order flashings and emergency callouts, our experienced team delivers quality workmanship with attention to detail. We also install efficient woodburners to keep your home warm this winter. Consents arranged and handled, so you can sit back and enjoy those warm winter nights.

156 Main Road, Kumeu | info@kpl.co.nz | 09 412 9108

South Head's native project



A six-year journey has ended for South Head's Anne and Andy Holst, the latest nursery to join Kaipara Moana Remediation (KMR) whānau. The farming couple, who work in travel and agricultural contracting, began their

nursery in 2020 and met criteria to grow native plants helping reduce sedimentation and siltation in Kaipara Harbour. The nursery sits on their 60ha farm 16km from Parakai and, while new to the sector, fits alongside their Aotea Angus stud of 30 breeding cows, with bulls sold annually. Encouraged by Te Awamutu friends with an established nursery, they have planted 120,000 natives on an 11ha former forestry block.

"We source seeds locally," they say, using manuka and kanuka from nearby farms, roadside coprosma and 100-year-old Helensville flax. "It's a bit like children," Anne says. "You give them food, water and shelter and they grow." She adds the reward is seeing plants out on farms improving the environment.

The nursery supplies plants for riparian, wetland, shelter and revegetation projects. Rodney Local Board chair Guy Wishart praised the knowledge at a community open day, while KMR's David McDermott said South Head's sand country is a key catchment area and local plants give landowners the best survival rates.

On KMR-supported 135ha Kaipara Hills farm, Geoff and Hayley Clayton faced major slip damage in 2023 after 185mm of rain in five hours on Auckland Anniversary weekend, followed by Cyclone Gabrielle two weeks later. Their KMR "Navigator" plan enabled fencing waterways, retiring steep land and planting, including 20km fencing and 60,000 trees (53,000 natives, 7,000 blackwoods). Comvita gifted 2,000 manuka, alongside 5,000 natives in 2022 and 1,000 funded via Forest Bridge Trust. About 1.5km fencing and raceways were destroyed but replaced. They aim to retire 80ha, plant 10,000 trees annually for five years, leaving 47ha pasture and running 90 beef cattle.

Winter Projects Start Here

Wattyl
 LD Advanced Interior Topcoat 4L Super White



\$134

SKU: 20037990

Accent
 Low Sheen Interior Paint & Primer in White 5L



\$99

SKU: 200328

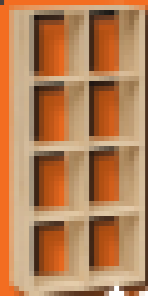
Buy Right
 Low Sheen Interior Paint in White 5L



\$39.98

SKU: 200307

Nouveau
 Essence 2x4 Organizer Cube H: 1473 mm, W: 760 mm, D: 340 mm Oak



\$124

SKU: 2001826

Max Rack
 Heavy Duty 4 Shelf Unit H: 1620mm, W: 814mm, D: 467mm Black



\$118

SKU: 200468

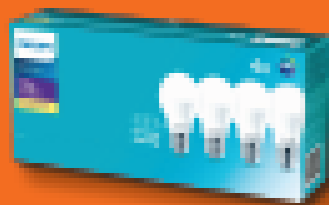
Nouveau
 Essence 2x3 Organizer Cube H: 812 mm, W: 318 mm, D: 267 mm Oak



\$36.38

SKU: 2001816

Phillips
 LED Bulb 11 Watt Warm White 4 pack



\$18.95

SKU: 2003069

GE Lighting
 Led Bulb Classic 9W 800lm 3 pack Warm White



\$10.88

SKU: 2010706

Number 8
 LED Light Bulb 9 Watt Warm White



\$2.98

SKU: 2006100

Mitre 10 MEGA Westgate & Henderson
 Northside Drive & Lincoln Road
 Monday to Sunday 7am to 6pm

**Big Range,
 Low Price,
 Local Advice.**



**MITRE 10
 MEGA**

**WESTGATE &
 HENDERSON**

Home & Garden

Winter DIY projects to tackle indoors



Cold, wet days are the perfect excuse to stay inside and finally tackle those home projects you've been putting off. This July, make the most of your time indoors with a few simple

DIY upgrades that can refresh your space and add real value. At Mitre 10 MEGA Westgate & Henderson, we're your local one-stop shop to help you get it done.

Freshen up with paint

A new coat of paint is one of the easiest ways to transform a room. Whether you're brightening up your walls or going for a warmer, more cosy tone, we've got the colours and tools to match. Winter is a great time for indoor painting - just allow a bit of extra drying time and keep airflow in mind.

Get organised

Winter is ideal for decluttering and improving storage. Install shelves, update wardrobes, or add practical storage solutions to your garage or living spaces. From DIY materials to ready-made options, we've got everything you need to create a more organised home.

Upgrade your lighting

With shorter days, lighting plays a big role in how your home feels. Swap to warm LED bulbs or add lamps to create a softer, more inviting atmosphere. It's a quick and affordable change that makes a noticeable difference.

Fix the little things

Take the time to tick off those small repairs - like fixing leaks, tightening handles, or stopping squeaks. These quick jobs are easy to complete and help keep your home in top shape through the season.

Start a simple feature project

If you're feeling motivated, try a small project like floating shelves or a feature wall. These are achievable over a weekend and can really elevate a room.

Your winter project starts here

Pop into Mitre 10 MEGA Westgate & Henderson this July and chat with our friendly team. We'll help you get everything sorted - so you can stay productive, warm, and inspired all winter long.

Mitre 10 MEGA Westgate & Henderson - With you all the way.

wallerprojects
MARK WALLER
 M: 021 802 845
 E: mark@wallerprojects.co.nz
 A: The Hangar, Catalina Bay, 2/2 Boundary Road, Hobsonville Point
 W: wallerprojects.co.nz
AWARD WINNING DESIGN & BUILD

AUTOWORX NZ
SERVICE CENTRE
EOIN STUART
 Phone 09 412 5900 | Mob 022 639 0274
 338 Main Road Huapai - Kumeu, Auckland 0810
 autoworxnz@outlook.com

BIGFOOT MOWING
 TRACTOR, MULCHING AND MOWING
 "TURN PADDOCKS INTO PARKS!"
 021 634 721

ANYTIME PEST CONTROL
 FLIES, ANTS, COCKROACHES, FLEAS
 RATS, MICE, SPIDERS, WASPS ETC.
 WEEDSPRAYING
KEVIN MORRIS REGISTERED TECHNICIAN
 PHONE: 09 411 7400 MOBILE: 027 277 7143

Buy right, buy once



When buying a new mower, choosing based on price alone can be a costly mistake. While budget is important, selecting the right mower for your property will ensure better performance and long-term value.

Key factors to consider include the size and terrain of your lawn, the type of grass, your preferred power source, and whether you want to catch clippings or mulch them. With so many options available, finding the right fit can be challenging.

The team at Hibiscus Outdoors can help you compare the pros and cons of different models and recommend the best mower for your needs. With a wide range of push, self-propelled, robot and ride-on mowers in store, it's easy to explore your options. As an independent retailer, they focus on finding the right solution for you, not promoting a particular brand.

Visit the Hibiscus Outdoors team at unit 8, 30 Foundry Road, Silverdale, to discuss your requirements and to check out their 'wall of mowers'.



HIBISCUS OUTDOORS
EQUIPMENT BBQS MOWERS LIFESTYLE

Hibiscus Outdoors is your locally owned and operated retail store and service centre. Our mechanics are here to service your small engine equipment and ride-on mowers. Don't wait until next spring, book your service and repair work in now and beat the rush!

Time for a service?
Need an engine repaired?
Call 09 9063777

BOOK NOW

RETAIL STORE + SERVICE CENTRE

- ✓ Outdoor Power Equipment
- ✓ Rotary Mowers
- ✓ Ride On Mowers
- ✓ BBQS
- ✓ Lifestyle Products
- ✓ Service and Repairs

09 906 3777 Unit 8, 30 Foundry Road, Silverdale Hibiscusoutdoors.co.nz

Sarah Ball
Senior Property Relationship Manager

Country Living Realty (Hobsonville) Limited
ta West Auckland Property Management

027 499 8415
office@wapm.co.nz
wapm.co.nz

2 Clark Road
Hobsonville, Auckland



West Auckland Property Management



Raine & Horne


Graham McIntyre
Licensed Agent
Kumeu | Hobsonville

027 632 0421
graham.mcintyre@hobsonville.rh.co.nz



rh.co.nz/Kumeu

Raine & Horne New Zealand PTY Ltd
Licensed REAA(2008)



mta ASSURED

Collision Repair CRA



Grant Castle

P (09) 412 8239 | 23 Wookey Lane, Kumeu

M 027 299 7054 | E castlepanelbeating@orcon.net.nz

NOR-WEST AND KUMEU
GLASS SERVICES

"Specialists in Windscreens & Glazing"

Some of our services include: Residential and Commercial Glass Repairs - Automotive Glass Repairs - Cat/Dog Door Installs - Splashbacks - Mirrors - Picture Frames - Double Glazing - Caravan and Boat Windows - Car and Truck Mirror Repairs - Stonechips

CALL - 09 412 9914 | nwkg@xtra.co.nz
9a Weza Lane, Kumeu, Auckland 0810



Young Learners

Creating a home for native lizards at Waimauku Kindergarten

At Waimauku Kindergarten, our tamariki have been busy transforming part of our outdoor environment into a purpose-built lizard garden. This exciting project began when the children showed a keen interest in the wildlife that shares our kindergarten grounds and wanted to learn more about how they could help protect and support native creatures.

From concept to creation, our tamariki have played a leading role in every stage of the project. They began by drawing detailed plans for the garden, sharing their ideas about what a lizard-friendly habitat might need. Through discussion, research, and hands-on exploration, they learned about the importance of shelter, warmth, food sources, and protection from predators. Together, they used this knowledge to help design a space that will support native skinks and other local wildlife.

As the garden has taken shape, children have been actively involved in digging, planting, moving materials, and creating sheltered spaces for lizards to thrive. Along the way, they have developed an understanding of biodiversity, conservation, sustainability, and kaitiakitanga - our responsibility to care for the natural world. They have also strengthened their skills in collaboration, problem-solving, communication, and perseverance as they worked together to bring their

ideas to life. This project forms part of our ongoing commitment to the EnviroSchools programme and our journey as a kindergarten that values environmental stewardship and sustainability. Through the support of our Kaitiaki Kindergarten Association, we have been able to participate in the Kaipātiki Project, providing meaningful opportunities for tamariki to learn about protecting native wildlife and restoring local ecosystems. Through real-life experiences such as this, children are discovering that their actions can make a positive difference to the environment and the creatures that call it home.

The lizard garden is just one example of the rich, child-led learning experiences that happen every day at Waimauku Kindergarten. We are incredibly proud of the creativity, teamwork, and dedication our tamariki have shown throughout this project.

If you would like to see more of what our kindergarten gets up to, we warmly invite you to come and visit. We would love to show you around, share our learning journey, and showcase the exciting opportunities our tamariki experience every day.





Spaces available

Discover the Kaitiaki Kindergarten difference



Phone: 09 411 8890



Celebrating Matariki: A Time to Remember, Reflect and Renew

Matariki marks the Māori New Year in Aotearoa New Zealand and signals a season of reflection, celebration, and new beginnings. As the Matariki star cluster rises in the winter sky, it invites us to pause and acknowledge the past, appreciate the present, and look ahead with hope.

Made up of nine stars, each with its own significance and connection to the natural world, Matariki has traditionally guided planting, harvesting, and fishing, helping communities understand the rhythms of the seasons and their environment. Together, the stars remind us of the importance of whānau, wellbeing, food, freshwater, caring for our environment, and nurturing our hopes and aspirations for the future.

Today, Matariki is celebrated across New Zealand through festivals, storytelling, music, kapa haka, shared meals, and community gatherings. It offers an opportunity for people to deepen their understanding of te ao Māori and embrace the values at the heart of Matariki – remembrance, gratitude, and renewal.

At Gumboots, one of the highlights of our year – especially for our older tamariki – is our annual Matariki Disco. This much-loved event brings our whānau together to connect, share kai, and kanikani the night away. It is a special time to come together as a community, gaze

at the sparkling stars above, remember those who are no longer with us, celebrate the present, and share our dreams and aspirations for the year ahead.

In the lead-up to our celebration, our tamariki enjoy a variety of meaningful experiences. They create beautiful artwork inspired by Matariki, bake delicious treats to share with friends and whānau, and help prepare and plant our gardens for the season ahead. Through these activities, they develop a deeper connection with nature, express their creativity, and gain an appreciation for the traditions and values that Matariki represents.

Above all, Matariki reminds us of the importance of togetherness, reflection, and hope. It encourages us to celebrate how far we have come, cherish the people around us, and look forward to the future with optimism and gratitude.

How will you and your whānau be celebrating Matariki this year?



Gumboots
Early Learning Centre

Great outdoor playgrounds

100% Qualified teacher ratios

MUSIC

Music Lessons In the Sun

Now enrolling: Babies for October onwards
Don't miss out!
Call us to visit and meet the team

Open 7am - 6pm - choose your own hours
Just minutes from Helensville / Waimauku / Kumeu
1157 Peak Rd The centre of everywhere Ph: 411 9038



Aged care

Winter is the perfect time to get your gear checked

Winter often means spending a little more time indoors, making it the perfect opportunity to give your mobility equipment the attention it deserves. At Kiwi Rehabilitation, we're here to help keep you mobile, comfortable, and confidently independent all year round.

Whether you're looking for a new mobility solution, need repairs or servicing, want to hire equipment during recovery, or are searching for a more budget-friendly option, our experienced team is ready to help.

Did you know we buy and refurbish pre-loved mobility equipment? By giving quality products a second life, we're helping make mobility solutions more accessible while reducing waste. If you have equipment you're no longer using or you're considering an upgrade, we'd love to hear from you.

From mobility scooters and wheelchairs to lift chairs, walkers, walking sticks, and daily living aids, we offer a wide range of products available for both hire and purchase.

Winter is also an ideal time to stay on top of maintenance. If your equipment needs a little TLC, our skilled technicians can help with everything from routine servicing and battery replacements to tyre repairs, faulty lights, and more complex repairs. Taking care of small issues now can help keep your equipment running safely and reliably when you need it most.

No matter where you are on your mobility journey, you can count on the friendly team at Kiwi Rehabilitation for expert advice, quality products, and personalised support.

Get in touch with us today or visit our website to learn more. Because at Kiwi Rehabilitation, "He Tangata - it is people", and people will always come first.

www.kiwirehab.co.nz

027 244 2443

sales@kiwirehab.co.nz

KIWI REHABILITATION
Your Local One-Stop Shop For
New or Used Products, Servicing
& Repairs - Give us a call, send us an email
or scan the QR code and get
in touch today!

sales@kiwirehab.co.nz
027 244 2443
www.kiwirehab.co.nz



Aged Care

Grey Power elects David Marshall as National President



Grey Power NZ Federation has elected David Marshall as its new National President, with the experienced Grey Power leader calling for a stronger national voice for senior New Zealanders as the country faces major debates over retirement income, healthcare, housing

and the cost of living.

Marshall was elected at Grey Power's annual meeting following more than a decade of service within the organisation and extensive leadership experience in community advocacy, local government and the private sector. "Grey Power has a vital role to play in ensuring the voices of older New Zealanders are heard by politicians, policymakers and the wider community," Marshall says.

"I am passionate about building a stronger, more sustainable organisation that can continue to advocate effectively for older people in a rapidly changing environment. We must ensure Grey Power remains the recognised and respected champion for senior New Zealanders." Marshall says one of the most significant issues facing Grey Power during his presidency would be the growing debate over the future of New Zealand Superannuation. "Decisions made over the next few years could have profound implications for both current and future retirees. Grey Power intends to be at the forefront of that discussion and ensure the views of older New Zealanders are heard.

"This debate is already underway within Grey Power, and I encourage all those 50+ year olds approaching

retirement to join their local association so they too can contribute their views on what sustainable retirement income should look like." He says Grey Power will also focus on growing membership, improving member services and continuing to modernise the organisation's systems and processes.

"Research shows there is strong support for Grey Power's mission among older New Zealanders who are not currently members. We need to better connect with those people and demonstrate the value of collective advocacy on the issues that matter most to seniors."

Having served as Grey Power's National Vice-President since 2023, Marshall has played a leading role in strengthening the organisation's advocacy, modernising its communications and improving its public profile.

He joined the Tauranga and Western Bay of Plenty Association in 2015, serving as vice-president for more than seven years before being elected to the national board as a zone representative in 2020. He currently chairs Grey Power's retirement income and taxation portfolio and the organisation's marketing committee.

Marshall is spearheading the development of a pilot project for older retirees currently unable to downsize from three-to-four bedroom homes in their local community, due to lack of access to bridging finance.

Before retiring to the Bay of Plenty, Marshall enjoyed a diverse career spanning education, healthcare marketing and consulting, including senior international roles in New Zealand, Australia and Germany. He served as a district councillor, hearings commissioner, community trust leader and volunteer mentor. Marshall will be supported by the Grey Power board comprising Carolyn Bates, Nerrily Frith, Lew Findlay (treasurer), Terry King, Bill Obers, Graeme Peters (vice president), and Margaret Sole (national secretary). Grey Power New Zealand represents tens of thousands of older New Zealanders through its nationwide network of local associations. The organisation advocates on issues including retirement income, healthcare, housing, transport, energy costs and the rights and wellbeing of older people.

KUMEU VILLAGE
Luxury Rest Home, Hospital,
Dementia and Respite Care

09 412 9112
www.kumeuvillage.co.nz

Aged Care

Celebrating King's Birthday at Craigweil House

Residents and staff at Craigweil House Home & Hospital recently came together to celebrate King's Birthday with a festive afternoon filled with fun, music, and delicious treats.

Our dedicated staff put in a wonderful effort decorating the facility with themed decorations, helping to create a warm and celebratory atmosphere for everyone to enjoy. Residents were also treated to a special afternoon tea featuring a selection of tasty goodies prepared for the occasion.

The celebration was made even more special as it coincided with our regular Happy Hour. Residents enjoyed relaxing with friends while listening to live music from Joe Fingers, who entertained everyone with a fantastic selection of familiar songs. Many residents sang along, tapped their feet, and shared happy memories inspired by the music.

It was a wonderful afternoon of celebration and companionship. Thank you to our staff for organising the event and to Joe Fingers for providing fantastic entertainment.

Come and have a look at what we have to offer, meet our friendly team, and see firsthand the activities, care, and companionship that make Craigweil House a special place to call home. We would be delighted to show you around.

PH 094208277

COME VISIT US!
WE ARE LOCATED NEXT TO PARAKAI SPRINGS

Discover a warm and caring home, nestled within the Kaipara Coast and Parakai's geothermal waters.
Rest Home • Hospital • Day Stays

Craigweil House
Home & Hospital
FEEL AT HOME WITH FAMILY

HENRIKWEST
CARE GROUP

09 420 8277 | 143 Parkhurst Rd, Parakai | info@craigweilhouse.co.nz





Health & Beauty

Support Ageing Skin Today



Sarah Tumulty - Functional Skincare Practitioner. SWAN Skin Wellbeing & Nutrition - Kumeu

Many people believe that once wrinkles, thinning skin and loss of firmness appear, there's little that can be done. The truth is that while ageing is a natural process, the skin has an incredible capacity to respond when given the right support.

As we age, our skin naturally becomes thinner and produces less collagen and elastin. Hormonal changes, sun exposure, inflammation, stress and lifestyle factors can all contribute to fine lines, dryness, loss of radiance, slower skin repair and changes in facial volume. One of the biggest misconceptions about ageing skin is that it is only influenced by the products we apply. In reality, factors such as nutrition, gut health, inflammation, stress, sleep, hormones and sun exposure can all influence how our skin ages. Supporting these foundations can help the skin function more effectively and maintain its resilience over time. Not all skincare works in the same way. As skin ages, its ability to repair and renew can slow. This is why I focus on ingredients that support skin function, such as retinaldehyde (a gentle yet effective form of Vitamin A), growth factors found in StemFactor to support skin repair, and liposomal delivery systems that help beneficial ingredients reach where they are needed most. Professional treatments can further support skin vitality. RevitaPen infusion treatments enhance ingredient delivery, while

Exosome Infusions help support skin renewal and repair. Liposomal Infusions use advanced delivery systems to help key ingredients penetrate more effectively where they are needed most. For those experiencing loss of facial volume, my Fat Pad Support Protocol helps nourish and support the skin's structure from inside. Most importantly, it's never too late to start. Healthy ageing isn't about looking younger—it's about helping your skin remain healthy, strong and radiant at every stage of life. To learn more, book a Skin Consultation or Skin Analysis appointment and discover how an inside-out approach can support your skin at any age.

Meet Carla from Zash Hair



Welcome to Zash Hair, where beautiful hair, personalised service, and a friendly salon experience come together. At the heart of Zash Hair is Carla, a passionate and dedicated hairdresser who loves helping her clients look and feel their absolute best.

With years of experience in the hair industry, Carla is committed to creating styles that suit each client's individual personality, lifestyle, and hair goals. Whether you're looking for a fresh cut, stunning colour, a complete transformation, or simply some professional hair advice, Carla takes pride in delivering exceptional results and ensuring every visit is enjoyable and relaxing. When she's not in the salon, Carla enjoys an active lifestyle and has a real passion for

Zash Hair
HAIR BY CARLA
 77 Waitakere Road, Waitakere, Auckland
 Phone: 021 814 663 zashhair

Sarah Tumulty
 Functional Skincare Practitioner & Nutritionist
 Advanced Skin Treatments & Root Cause Support
 027 4473013
 www.swanskinandnutrition.com
 swan.skinandnutrition@gmail.com
 Kumeu, Auckland

Health & Beauty

fitness. She loves weight training, attending spin classes, and embracing all aspects of health and wellbeing. Family is also incredibly important to her, and she treasures spending time with her two boys, Zack and Ash. Together they enjoy making memories, exploring new places, and enjoying holidays whenever possible.

Carla is also happiest by the water, spending time at the beach, soaking up the sunshine, and enjoying the outdoors with family and friends. At Zash Hair, we are incredibly grateful for the loyalty and support of our wonderful existing clients. Your continued trust means the world to us. We are also excited to welcome new clients to the salon and invite you to experience the warm, professional service that makes Zash Hair such a special place.

We look forward to seeing you in the salon soon.

Zash Hair, 77 Waitakere Road Waitakere Ph- 021814663

Confused about skin? Start here

If you have ever looked at your skin and thought, "I'd love to improve this, but I have no idea what treatment I actually need," you are not alone, and we'd love to help. Skincare and skin treatments often feel overwhelming. There are endless products, devices and marketing claims, making it hard to know what is genuinely right for your skin. At

Restore Cosmed, our role is to help you cut through the confusion and make a clear, safe and evidence-based plan.

Restore Cosmed is your local doctor-led skin and laser clinic, based in Huapai and led by Dr Cherie, an award-winning cosmetic medicine doctor and national trainer. Our approach is warm, approachable and never intimidating. You do not need to know what treatment you need before booking.

Every treatment journey starts with understanding. In your consultation, we take time to listen, assess your skin properly, explain what is happening, and talk you through suitable options. From there, we develop a plan that works for you and your goals, with clear advice and realistic expectations.

One of the things our patients value most is continuity of care. At Restore Cosmed, you know who you are seeing and who is taking care of you. We get to know your skin, your goals and your preferences over time, so your care feels personal, considered and never one-size-fits-all.

If you have a skin concern, we encourage you to reach out. We commonly help with redness, pigmentation, sun damage, acne, rosacea, melasma, scarring, texture, general skin health, ageing well, unwanted hair, tattoo removal, hair restoration, skin checks and more.

We are currently running 25% off laser packages this month. So if you've been on the fence, let this be your sign to come in for a consultation. Restore Cosmed is located at 20 Matua Rd, Huapai. Book at www.restorecosmed.co.nz.

RESTORE COSMED
 SKIN AND MEDICAL

- **Cosmetic Injectables**
- **Dermatological Assessments and Treatment** (Acne, Rosacea, Melasma etc.)
- **Skin Cancer Checks**
- **Laser Treatments** (Redness/ Vessels, Pigmentation/ Sunspots, Hair Removal, Tattoo Removal)
- **Advanced Skin Treatments** (acne, barrier repair, ageing well)
- **Hair Restoration Treatment** (men and women)
- **Evidence Based, Medical Grade Skincare**

DR. CHERIE
 GP SUBSPECIALIST - SKIN AND COSMETIC MEDICINE

BRENNA - ADVANCED SKIN AND LASER THERAPIST

www.restorecosmed.co.nz
 20 Matua Road, Huapai
 contact@restorecosmed.co.nz (09)265 1704

Is your skin feeling the change of season?



As winter settles in, you may notice your skin beginning to feel drier, tighter or more sensitive than usual. Cooler temperatures, wind, indoor heating and long hot showers can all affect the skin's natural protective barrier, meaning the products and routine that worked well during summer may no longer be giving your skin what it needs.

At lovesoul beauty & spa studio, we believe winter skincare is not simply about applying a heavier moisturiser. It is about understanding what is happening within your skin and choosing treatments and products that help restore hydration, comfort and resilience. A professional facial can provide a much-needed boost during the colder months, while also giving your therapist an opportunity to assess any seasonal changes in your skin. Small adjustments to your home routine - such as using a gentler cleanser, adding extra hydration or introducing a nourishing facial oil can also make a noticeable difference.

Winter is often a season when we naturally slow down, making it the perfect time to give your skin and body some extra care. Whether that means booking a relaxing facial or massage, reviewing your skincare routine, or simply creating a few more moments of rest at home, looking after yourself does not need to wait for a special occasion. The team at lovesoul is always happy to help you choose treatments and products suited to your

individual needs.

lovesoul beauty & spa studio. 09-411 5226- Waimauku Village. Book online at lovesoul.co.nz

Ask Dr. Heather



Someone told me to wait until winter before booking a chemical peel. Is that true? Anon, Huapai.

Mostly, yes. The cooler months can be a good time for certain skin treatments, but not because there is anything magical about the season. The main reason is sunlight. Treatments such as chemical peels can make the skin more sensitive. Winter usually means less intense sun exposure and fewer long days outside, which can make aftercare easier, however that does not mean you can forget sunscreen. We all need daily SPF, especially after treatments that affect the skin barrier. Winter light may feel softer, but UV exposure doesn't disappear just because the weather is cold.

I also find winter a useful time to reset the skin. Many people come in with dullness, congestion, uneven texture, pigmentation or dryness that has built up over time. A carefully chosen chemical peel can help refresh the skin surface by stimulating regeneration of baby skin cells.

So yes, the advice has truth behind it. Winter can be a good window for skin treatments such as chemical peels because the timing often suits recovery with less time spent outside. It should not however be treated as a seasonal sales push by injectors. The right treatment still depends on your skin, your goals and what your skin can safely tolerate. If you are unsure, start with a consultation with an injector you trust. A good plan should feel measured, not rushed.

Dr. Heather Anderson is a Cosmetic and Emergency Doctor who practises in her own clinic at ALLOR Cosmetic Medicine in Whenuapai and features in the All or Nothing Podcast where she discusses self-worth and other aspects of cosmetic medicine (available on Spotify, Youtube and iHeartRadio). If you have a question you would like answered anonymously, email askdrheather@allor.co.nz

ALLOR
COSMETIC MEDICINE

Dr. Heather Anderson
72 Waimarie Rd, Whenuapai
M: 0222626762
www.allor.co.nz

lovesoul
BEAUTY & SPA STUDIO

Your Sanctuary for skin, self & soul
Holistic beauty + wellness in the heart of Waimauku

- Skin Consultations
- Waxing and Tinting
- Massage and Facials
- Manicures and Pedicures

Gift Vouchers Available

lovesoul.co.nz * 09 411-5226 * hello@lovesoul.co.nz
8 Waimauku Station Road
Walk-ins welcome

Area Columnists

Sayers says it



By Rodney Councillor **Greg Sayers**

Where Does the Money Go? Each year, Rodney residents receive higher rates bills to help fund Auckland's growing needs. We are told these rates support transport, parks, libraries,

environmental programmes, community facilities and regional infrastructure. Yet one simple question remains unanswered: how much of Rodney's rates revenue is actually spent back in Rodney?

As your elected Council representative, I have repeatedly asked Auckland Council for a clear breakdown comparing the rates collected from Rodney with the amount invested back into Rodney. Despite these requests, no straightforward answer has been provided.

While Council publishes information on local board budgets, projects and regional programmes, the key figure ratepayers would reasonably expect to see is missing: what Rodney contributes versus what Rodney receives. Council staff argue this is difficult because many services cross Local Board boundaries. I do not accept that explanation. Large organisations routinely allocate costs across regions and business units. Auckland Council should be able to provide a basic breakdown of rates collected and expenditure by area, eg: for Kumeu, Helensville, or Riverhead, etc

Ratepayers deserve transparency. They should be able to see how much is collected locally, how much is reinvested locally and how much is allocated to regional activities.

Disappointingly, there has been little political appetite among the majority of councillors to demand this information. Yet accountability is essential, particularly as rates continue to rise. Council must focus on delivering value and prioritising essential services. Rodney is one of Auckland's fastest-growing areas, requiring infrastructure, roads, community facilities, environmental protection and common-sense flood protection. Without clear information, residents are left to speculate. Transparency would replace assumptions with facts and allow an informed discussion about whether Rodney is receiving a fair return on its rates

Got council issues? ...
Say it to Sayers

Online video, over the phone, or one-on-one bookings available

Greg Sayers - Rodney COUNCILLOR
P: 021 285 9900 | www.gregsayers.co.nz

contribution. Rodney residents are not seeking special treatment. I am simply asking for accountability, transparency and an answer to a straightforward question from Council: where does Rodney's money go?

Jools Topp tribute



Former Helensville resident Jools Topp died on May 23 aged 68. She had breast cancer for more than 20 years.

Dame Julie Bethridge Topp (Jools) lived in the Helensville area for about 17 years and was heavily involved with horses, helping train and rehabilitate them.

Geoff Dobson interviewed her shortly after her breast cancer diagnosis in October 2006. Jools was a Topp Twin with identical twin Lynda, performing political protest songs and featuring on television.

Documentary "The Topp Twins: Untouchable Girls" aired in 2009 and another is expected next year. They also wrote various books, including memoirs in 2003 and 2023. Born in Huntly on May 14, 1958, the Topp twins grew up on the family farm and performed from the age of five.

The Topp Twins did comedy and music for about 40 years from the 1970s in Christchurch and Auckland, moving to Auckland in the 1980s, becoming among the best-known Kiwi entertainers. Lynda was also diagnosed with breast cancer in 2021.

Donations can be made to West Auckland Hospice.

July at Kumeu Arts



July is packed with creativity at Kumeu Arts. Join us on 18 July for a live performance by the incredible Fables. We're also celebrating the 2026 Matariki theme, Matariki herenga waka - "Matariki, the gathering of canoes" with a special

members' exhibition in our Main Gallery. Our opening night is a chance to connect with the community, and everyone is welcome. Enjoy interactive whānau-friendly activities that continue throughout the school holidays. In the Pod Gallery, browse our Silent Art Auction featuring works generously donated by local artists. It's a fantastic opportunity to purchase quality artwork at affordable prices while supporting Kumeu Arts. Also this month, emerging local artist Nico Harrison takes over the Pip Window Gallery with a striking new exhibition. Creative Matters will be running two weeks of fun school holiday workshops - book early to secure your child's place. Visit our website or drop in to learn more.

Kumeu Library



July's winter school holidays are almost here, and Kumeu Library is your go-to local destination for free, family-friendly fun. Join us daily at 10:30am for engaging activities such as a Kahoot! quiz, mandala fish craft, bat-themed fun, and creating with air-dried clay. All activities are suitable for school-aged children. On Tuesday mornings, enjoy a PG rated movie screening at 10.30am with complimentary popcorn, while all week long you can drop in for colouring, puzzles, and our ever-popular scavenger hunts - available all day, every day. Make the most of the free fun at Kumeu Library in the school holidays—come and discover everything your local library has to offer.

Winter is the ideal season for all of us to slow down and enjoy a great read, no matter our age. Kumeu Library has an extensive collection - whether you're looking for engaging fiction, practical guides, or fresh inspiration for travel or gardening, you're sure to discover something great. Prefer to stay in? Our eCollections are available anytime, so you can enjoy the library from the comfort of home.

Save the date: Kumeu Library is hosting a Falls Prevention Workshop on Thursday 13 August at 10:30am. Staying steady on your feet is key to maintaining independence, and many falls can be prevented. This free session led by a Harbour Sport Community Strength & Balance Trainer will give you practical tips to support your strength and balance. Put the date in your calendar and join us for this free workshop.

Keep up to date with all Kumeu Library's news and events by following us on Facebook (www.facebook.com/kumeulibrary).

Catz Kumeu show



David Crymble (NZCF), pictured, was among three judges (including two from Australia) at the Catz Incorporated show in the Kumeu Community Centre on Sunday, May 24.

He uses a pheasant's tail feather to hold cats' attention while he examines them. Catz Inc show manager John Maclean says about 58 cats were in the BlackHawk-sponsored show, visited by hundreds of people.

Cats included Ragdoll, British, Oriental, Temple, Abyssinian and Siamese.

Catz Inc shows are held in Kumeu about once a month, the next on Sunday, July 19.

Visit the Catz Inc Facebook page for more information.

Waimauku West: too big, too fast

You may have heard that a large-scale development is being fast-tracked for Waimauku, but do you know what this means for our community?

Home to around 1,400 people, Waimauku currently has about 500 houses. The proposed Waimauku West development is over 2,000 additional houses - more than 4x the size of the existing township.

The Waimauku West proposal raises real concerns about flooding, traffic, and other infrastructure systems already under pressure across the northwest area. Concerns that haven't been addressed with many locals believe this development is too big and happening too fast for the area's infrastructure to support.

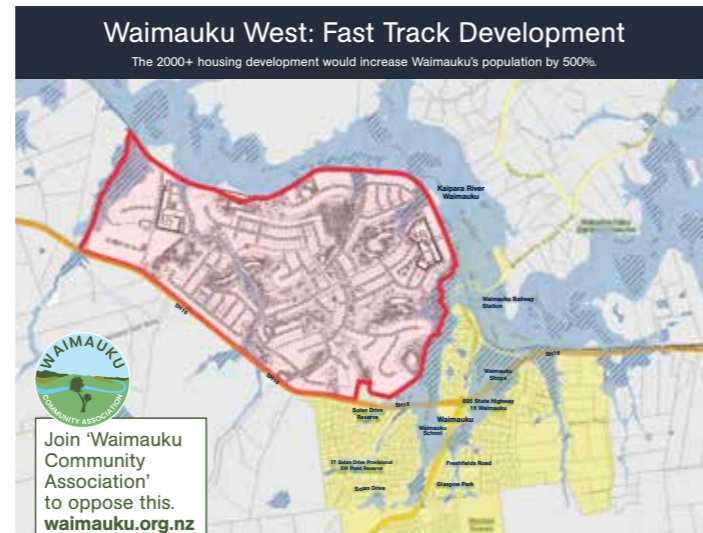
The additional stormwater runoff will impact waterways across Waimauku, Huapai, Kumeu, Taupaki and Helensville, increasing flood risk across the wider area. Recent weather events show we're already dealing with more extreme conditions, not less.

Whether you live, work or travel through this part of Rodney, you will feel the impact. SH16 is already congested, and this proposal will mean residents, freight, business operators, and visitors will spend more time stuck in traffic.

This isn't about preventing growth, it's about getting it right the first time. The fast-track process does not allow normal community consultation. Only neighbours or community groups can provide objections or feedback into the proposed development. Our views matter and the only way to protect our community is for us all to stand together to oppose the current development. We need to be united in drawing a line in the sand.

We're making progress - more than 200 people attended meetings, and the Waimauku Community Association now has over 400 members. To have a powerful impact, we need a strong voice through our association. Please visit www.waimauku.org.nz to sign up, and to learn more about the Waimauku West fast-track proposal and what you can do. By the Waimauku Community Association.

Map of Waimauku West site vs Waimauku township



Time for a check-up?

Bowel health is a topic that many avoid, yet silence around it can have deadly consequences. June marked Bowel Cancer Awareness Month in New Zealand, but the message remains the same. Waitemata Endoscopy is proud to support efforts to break the "poo taboo" and encourage open conversations about symptoms, risk factors, and early action.

New Zealand has one of the highest rates of bowel cancer in the world, where it is the second leading cause of cancer death, with more than 3,000 diagnoses and over 1,200 deaths each year.

Despite this, awareness remains low, and one of the biggest barriers is not a lack of knowledge about the disease itself, but discomfort around talking about bowel habits. Blood in the stool, changes in bowel motion, abdominal discomfort, or unexplained fatigue are often dismissed or self-managed in silence. Many people hope symptoms will settle on their own, but persistent change is never something to ignore.

Breaking the "poo taboo" is not about creating alarm, it is about creating openness. Normalising conversations about bowel health allows symptoms to be addressed earlier, investigations to happen sooner, and outcomes to improve. In many cases, early assessment leads to reassurance. In others, it allows pre-cancerous changes to be identified and treated before they progress. No one ever died of embarrassment, but they do die of

bowel cancer.

A colonoscopy is a common and safe procedure that allows us to investigate the inside of the bowel and remove pre-cancerous polyps at the same time. It is one of the most effective tests available for both diagnosing and preventing bowel cancer at an early, and often preventable stage.

At Waitemata Endoscopy, we aim to make taking a proactive approach to your bowel health easy. Our experienced team will help to put you at ease when it comes to your endoscopy. Take a virtual tour of the patient journey and our clinic for an insight of what to expect at www.waitemataendoscopy.co.nz/locations

Dr John Perry

Gastroenterologist and Endoscopist

Waitemata Endoscopy



WE

are dedicated to exceptional patient care

With increased capacity, Waitemata Endoscopy offers greater access to a group of experienced Gastroenterologists and Surgeons, dedicated to providing quality and compassionate care.

Appointments are available within 7 working days for a Colonoscopy or Gastroscopy by matching you with the availability of our Specialists.

Scan the QR code to view Dr Perry's video on Bowel Cancer

Talk to your GP about a referral to the Waitemata Endoscopy Group, or you can self-refer via:

www.waitemataendoscopy.co.nz/referrals

Or call us on (09) 925 4449

// 53 Lincoln Rd, Henderson
// 212 Wairau Rd, Wairau Valley

Dr John Perry
Gastroenterologist & Endoscopist
a joint venture with Southern Cross Healthcare

Community fundraising delivers lifesaving AED for Taupaki



The Taupaki Hall is now the home to a new Automated External Defibrillator (AED), thanks to the fundraising efforts of a local Taupaki resident, along with generous sponsorships and community donations.

The installation marks an important step in improving public safety at the popular community park, which is regularly used by families, sports teams, walkers, and visitors from across the area. The AED will provide immediate access to lifesaving equipment in the event of a sudden cardiac arrest, where every minute can make a critical difference.

Funds for the AED were raised through generous donations from local residents, local businesses, and two main sponsors, Drain Ninjas and NumberWorks'nWords Tutoring, highlighting the strong community spirit within Taupaki and the wider Kumeū district.

The organiser, Una, a Taupaki resident, said the project was driven by a shared commitment to ensuring the park

remains a safe and well-equipped space for everyone. "Thank you to everyone who contributed to the fundraising effort and supported the installation process," the organiser said.

On June 6th, the AED was installed and unveiled on the Taupaki hall across from the Taupaki Park and available for use in an emergency while waiting for ambulance services to arrive. Contact: Kyra Shaw-Toomey

kyra@rodneycommunity.org.nz

The Village Market Helensville Showgrounds

Sunday 19th July 8.30am to 1pm

We have a special treat this month with live music from our very own Sharon from Jumbuck Carding and band The Doona's. Come ready to dance the morning away to all your rock & roll favourites and more, or just come along to enjoy a coffee and something tasty from the market café while you explore the locally produced goods and meet the creators - everything from crochet to a baby barn.

There's plenty of fresh seasonal fruit and veg too plus



plants, preserves, flowers and more. If you're looking for a bargain check out the Lions books and our car boot area - something for everyone.

No dogs please with the exception of assistance dogs. Gold coin donation for parking - proceeds to the Helensville/Kaukapakapa scouts and St John youth. For more information contact sarah@riversidecrafts.co.nz

Chris Penk

Chris Penk - MP for Kaipara Ki Mahurangi

Driving through our foggy district recently has given me more than one prompt to think about the future, and a reminder of the confidence that being able to see where you're headed can bring. As your local representative, my goal isn't to pretend I have a crystal ball but rather to work directly alongside you so we look ahead and ensure our community actively participates in steering and shaping our future.

With this in mind, a major topic locally continues to be the proposed Waimauku West Development. As your local MP, I don't have a role as a decision-maker in resource consent processes, but I certainly play a role in reflecting the views of our communities to those who do make the calls. As such, and as you may have heard, I have drafted a letter to the Fast Track consenting panel to firmly express my view that any new development in northwest Auckland must properly account for historic flooding risks, local issues like school and transport demands, and the heavy cost of supporting infrastructure.

Beyond infrastructure, it's been a busy and rewarding month connecting with locals and after putting out the call for more local JPs, I've had many interviews recently, and it is incredibly heartening to see so much interest from people wanting to serve the community. I also had a wonderfully 'sciency' time dropping into the Science Roadshow at Waimauku School (thanks for having me!) As

the new Minister for Space, seeing STEM in action is a real highlight and we might just have some future Kiwi space tech innovators right here in the district!

Ultimately, the path forward comes down to fixing the basics and building the future together so please stay in touch and help us map out a bright road ahead.



Chris Penk

MP for Kaipara ki Mahurangi

Here to help

134 Main Road, Huapai • christopherpenk@parliament.govt.nz • 09 412 2496

Authorised by Chris Penk, 134 Main Road, Huapai.

Kyra Shaw-Toomey
Community Facilitator - Kumeū & Surrounds
kyra@rodneycommunity.org.nz

Free Community activities: July - Aug 2026

FREE

CIRCUS HOLIDAY PROGRAM

13 - 16th July | Kumeū Community Centre & Waimauku War Memorial Hall

FREE

ADAPTIVE SKATEBOARDING

Friday 17 July | Kumeū Community Centre

FREE

EVERSTRONG SENIOR GROUP FITNESS

Thursdays 10:30-11:30am from July 23rd | Kumeū Community Center

Check out all our events and initiatives Rodney-wide:
www.rodneycommunity.org.nz/whats-on/

Find out what's on in Kumeū and surrounding areas.

PROUDLY SUPPORTED BY:

Locals helping locals do more

Your local money experts for personal and business finance.

mtf.co.nz/kumeu

Responsible lending checks and criteria. terms and conditions apply. See mtf.co.nz/terms

A fund raising concert at St Chad's



On Saturday 11th July 2026, at 2.30, St Chad's Anglican Church in Huapai is delighted to welcome back the Three Mezzos vocal trio for another concert.

Three Mezzos is an ensemble which was founded in 1998. In the following 28 years they have performed in centres from Taupo to the Bay of Islands, singing in churches, museums and historic houses.

The three singers and their accompanist will present a varied and enjoyable programme, ranging from classical items through folksongs to arrangements of Broadway show numbers.

Three Mezzos enjoy supporting charities with their performances and were delighted that we at St Chad's decided to support local foodbank South Kaipara Good Food. We hope to raise lots of money for the great work they do. Music-lovers are invited to enjoy an afternoon of wonderful music and support a local charity at the same time.

Tickets are \$20 in advance, \$25 on the door and for children a gold coin donation. Contact Colin Newel at saintchadshuapai@gmail.com. (Photo) The 3 Mezzos and their accompanist



Cub Cadet **HONDA** **HANSA** **Masport**

54 Main Rd Kumeu PH: 412 8592 OPEN MON-SAT

NOW AT TWO HANDY LOCATIONS FOR EXPERT ADVICE & SERVICE

15 Kakano Rd Westgate PH: 930 9999 OPEN 7 DAYS

PET PATCH
Your Local Pet Store

1 Shamrock Drive Kumeu
09 412 2009
www.petpatch.co.nz

100% NZ Owned

Hot Rod Hang Out - January 2026



The rumble of engines and the gleam of polished chrome had been the lifeblood of the East Bay Rods Inc. since it was first founded back in 1968. A passionate group of young men had formed the club

drawn together by their love for pre-49 hot rods. Decades later, most of them, their hair a little greyer, their laughs a little deeper, are still dedicated members today. In January 2026, the club's current President, Donna Smith, along with committee members Warwick Dawes, Mike McCoy, Shayne Chalklen, and Warren Simpson, rallied the club for a special cause. They planned the inaugural Hot Rod Hang Out, a fundraiser benefiting the Kumeu Volunteer Fire Brigade. It was their way of giving back to the brigade that worked tirelessly to care for their community. The Kumeu Showgrounds became a hub for community events; this was the perfect venue. The day of the Hang Out dawned bright and clear, the air buzzing with anticipation, a blend of exhaust fumes and barbecue smoke. While the event wasn't open to the general public, an exclusive list of NZHRA members arrived, their custom hot rods gleaming under the summer sun. Around eighty vehicles, each a unique work of art, filled the showgrounds, their vibrant colours reflecting off each other. A hush fell over the crowd as the main event began: a demonstration by

Burnetts

SEPTIC & WATER TANK CLEANING

YOUR SEPTIC TANK SHOULD BE CLEANED EVERY 3 YEARS (AVERAGE FAMILY OF 4)

WE SERVICE ALL AREAS

PROMPT, PROFESSIONAL SERVICE WITH 30 YEARS EXPERIENCE

PHONE: 09 412 9210 OR 027 492 4494

the Kumeu Volunteer Fire Brigade. With precision and speed, the firefighters showcased their skills, cutting 2 volunteers safely out of a car, a stark reminder of the vital work they do. The sounds of the Brendan Ham Band soon filled the air, providing the soundtrack to the day. Greg from Krave Catering whipped up a Texan BBQ feast, the aroma of smoked meats making mouths water. Sarah's coffee caravan did a brisk business, and Movenpick's ice cream cart offered a refreshing respite from the warmth. A surprising visit from the Monster energy Drink team added to the excitement as they handed out promotional drinks. Amidst the hot rods and the music, other attractions beckoned. Candles and crystals in a pop up stall offered unique finds, while Annamarie Hucken provided relaxing reflexology massages. Jackie and the Drunk Possum had tables filled with hot rod memorabilia, keeping enthusiasts happy. As the day drew to a close, a sense of camaraderie filled the air, amplified by the generous giveaways from Smits Group (Maguiars). The Hot Rod Hang Out was more than just a car show; it was a testament to community spirit, passionate clubs, and the joy of giving back. We want to thank each and every one of our sponsors Auto Super Shoppe - Storage 4 You - GMS Hot Rods - Albany ITM - Safe Guard Cargo Nets - Dave Tuke - Hopper Construction - Classic Cover Insurance - Pitstop Henderson - William Willis - Ken & Jill Logan - Ed & Jill Campbell - Western Caskets - Richard & Lorraine Rooke - Dawes Management Services - Kumeu Huapai Panelbeaters - Autoworx Huapai - Les Young - Black Bull Kumeu - Smits Group - Kumeu Hire - International Retro - American Auto Parts

Stihl Shop- Kumeu

Supporting Local for Over a Decade

When it comes to outdoor power equipment, experience matters.

For more than ten years, STIHL SHOP Kumeu has been proudly serving the North West Auckland community,



providing expert advice, quality products, and professional servicing that local homeowners, contractors, lifestyle block owners, and commercial operators can rely on.

As the area's specialist dealer for Walker Mowers, Cub Cadet, Hansa Chippers and their own STIHL products, the team offers expert sales, servicing, and support for some of the world's most respected brands.

Whether customers need a chainsaw for firewood, a ride-on mower for acreage, or advice on maintaining small engines, the knowledgeable team takes pride in matching people with the right equipment for the job. Their workshop technicians are equally respected for their expertise in servicing and repairs, helping customers get the best performance and lifespan from their machines.

Unlike businesses that simply sell products, STIHL SHOP Kumeu has built its reputation through long-term relationships, specialist knowledge, and ongoing support for customers across the region.

The business is also proud of its strong community connections. Over the years, STIHL SHOP Kumeu has and continues to support numerous local schools, sports clubs, community groups, fundraising initiatives, and events that help make the Kumeu district such a great place to live and work.

As a locally focused business with deep roots in the community, STIHL SHOP Kumeu remains committed to providing the service, expertise, and support that only an established specialist dealer can offer.

For quality outdoor power equipment, expert advice, and service you can trust, the local choice continues to be STIHL SHOP Kumeu.

STIHL SHOP Kumeu, 54 Main Road - OPEN 7 DAYS

Are you affected by a compulsory land acquisition, designation or a notice of requirement?



- + Have you been notified that some or all of your property may be required for transport projects now or sometime in the next 10 to 30 years?
- + Thorn Law Limited is a specialist legal practice with extensive experience acting for land & building owners facing compulsory land acquisitions under the Public Works Act 1981.

For further information, visit our website www.thornlaw.co.nz or phone (09) 304 0666. We are happy to have an initial discussion with you on a no-obligation basis if your property is or may be affected.

WAIMAUKU AUTOMOTIVE

FREE WOF

WITH ANY SERVICE

**LIMITED
TIME
OFFER!**

 **COURTESY CARS AVAILABLE** 

**+ FREE
CAR WASH**

 **SAFETY CHECKS**
Brakes, Tires, Lights & More

 **BETTER FUEL EFFICIENCY**
Improve Your Mileage

 **SAVE ON REPAIRS**
Prevent Costly Breakdowns

 **EXTEND VEHICLE LIFE**
Keep Your Car Running Longer

 **BOOST RESALE VALUE**
Increase Your Car's Worth

 **AVOID BREAKDOWNS**
Catch Problems Early

HURRY! DON'T MISS OUT!

 **09 411 7579**

 **906 STATE HIGHWAY 16, WAIMAUKU**

BATTERIES FOR ALL VEHICLES

ALL THE BEST BRANDS
AT THE **BEST PRICES**
YOU WILL FIND ANYWHERE!



 **Batteries that last and last**

 **BOSCH**
Invented for life

 **EXIDE**
THE POWER WITHIN

 **YUASA**

 **ENDURANT**
BUILT TO LAST

 **VARTA**
In service for you



TRADE TYRES

At Waimauku Automotive

New Zealand's favourite online store
for **great savings** on tyres and wheels

 **PREMIUM
TYRE BRANDS**

 **STYLISH
WHEELS**

 **EXPERT
FITTING**

 **GREAT
PRICES**



GET THE GRIP. GET THE LOOK. GET IT DONE RIGHT.

www.tradetyres.co.nz

 **GOOD YEAR**


 **YOKOHAMA**

 **MAXXIS**

 **GOODRIDE**

 **KUMHO TYRE**

 **ARIVO**

 906 STATE HIGHWAY 16,
WAIMAUKU

 09 411 7579

 **TRADE TYRES**